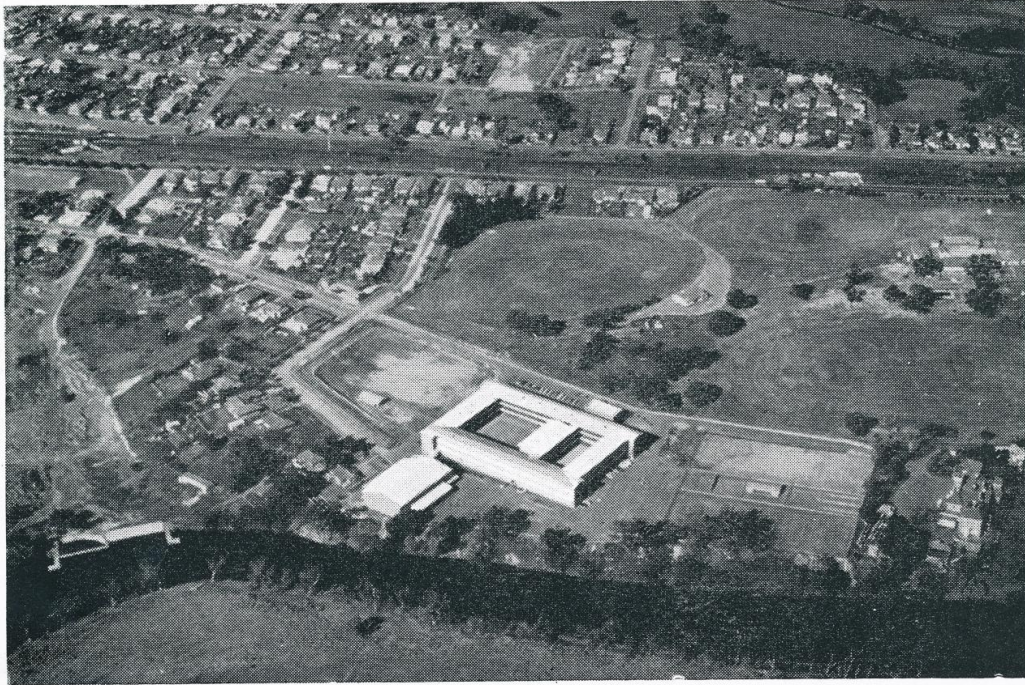


Governor Stirling Senior High School

A Building in Progress From the Beginning to Now



Brian Crisp Staff member June 1964 to December 1999

TABLE OF CONTENTS

FOREWORD	5
THE CHRONOLOGY OF THE BUILDINGS - 1956 TO 2013.....	7
IN SUMMARY:.....	8
THE ORIGINAL 1959 BUILDING	9
THE GSSHS MURALS PRESENTED BY CLAUDE HOTCHIN:	13
THE ORIGINAL BUILDING FLOOR PLANS	15
SOME FEATURES OF GSSHS IN THE EARLY 1960s.....	18
1964 THE ANNEXATION of WOODBRIDGE HOUSE.....	19
ADDITIONS TO THE ORIGINAL BUILDING:	21
1966 THE SCIENCE BLOCK.....	22
1971 THE LIBRARY (and SQUASH COURTS).....	22
1975 PREVOCATIONAL CENTRE.....	24
1985: THE RE-NUMBERING OF ROOMS	25
1987: FRONT OFFICE UPGRADE.....	27
THE CAMPUS MAPS	29
Sir CLAUDE HOTCHIN O.B.E.....	31
TERENCE TROWELL: ARTIST	36
Copyright Information	38
About Me	38
Comics Down Under.....	39
Terry Trowell - "Lost" Paintings Uncovered in WA	39
APPENDIX: The Claude Hotchin Battye Library extracted files	42

This book was privately printed by the author. It is not for sale,

Every effort has been made to acknowledge sources.

That Edition is available at the following web address

http://govstirling.crispfamily.net/governorstirling_a_building_in_progress.pdf

Each of the sections is concluded with the Webdings number 71 symbol



Brian Crisp
Lesmurdie W.A.

FOREWORD

This publication is my response to the opening of the new Governor Stirling. Also, it could be said that this publication is in recognition of the 50th Anniversary of my appointment to Governor Stirling Senior High School.

I was transferred in 1964 from Belmont High School to teach Geography at Governor Stirling. I had been Belmont's School Librarian. Apart from a year as Deputy Principal at Wundowie Junior High School in 1968 and a year overseas in 1972, where I taught Geography in Scotland at Auchterarder Secondary School, I taught only at Governor Stirling until the end of 1999.

From 1971 onwards, eight of those years were as Relieving Deputy Principal. I worked under nine different Principals including Miss Claire Casey, the first woman in the Western Australian State High School System to be appointed as Principal. I was always interested in all of the additions and alterations to the original school building.

My time at Govo commenced when the School was just the original building with Woodbridge House having been annexed to provide accommodation at the commencement of the 1964 school year. I was witness to all the building renovations, alterations and additions.

By the time I retired at the end of 1999, the School building required ongoing maintenance to deal with problems such as constant attacks from termites, asbestos removal, rusting veranda posts, and threats from collapsing ceilings. There was much discussion on the need for a whole new school building and the virtues of rebuilding the school in the Midland Workshops area. However, the decision was to rebuild on the original site. At the end of 2010 the School was closed for demolition and the new School was opened on the first day of the new school year for 2013.

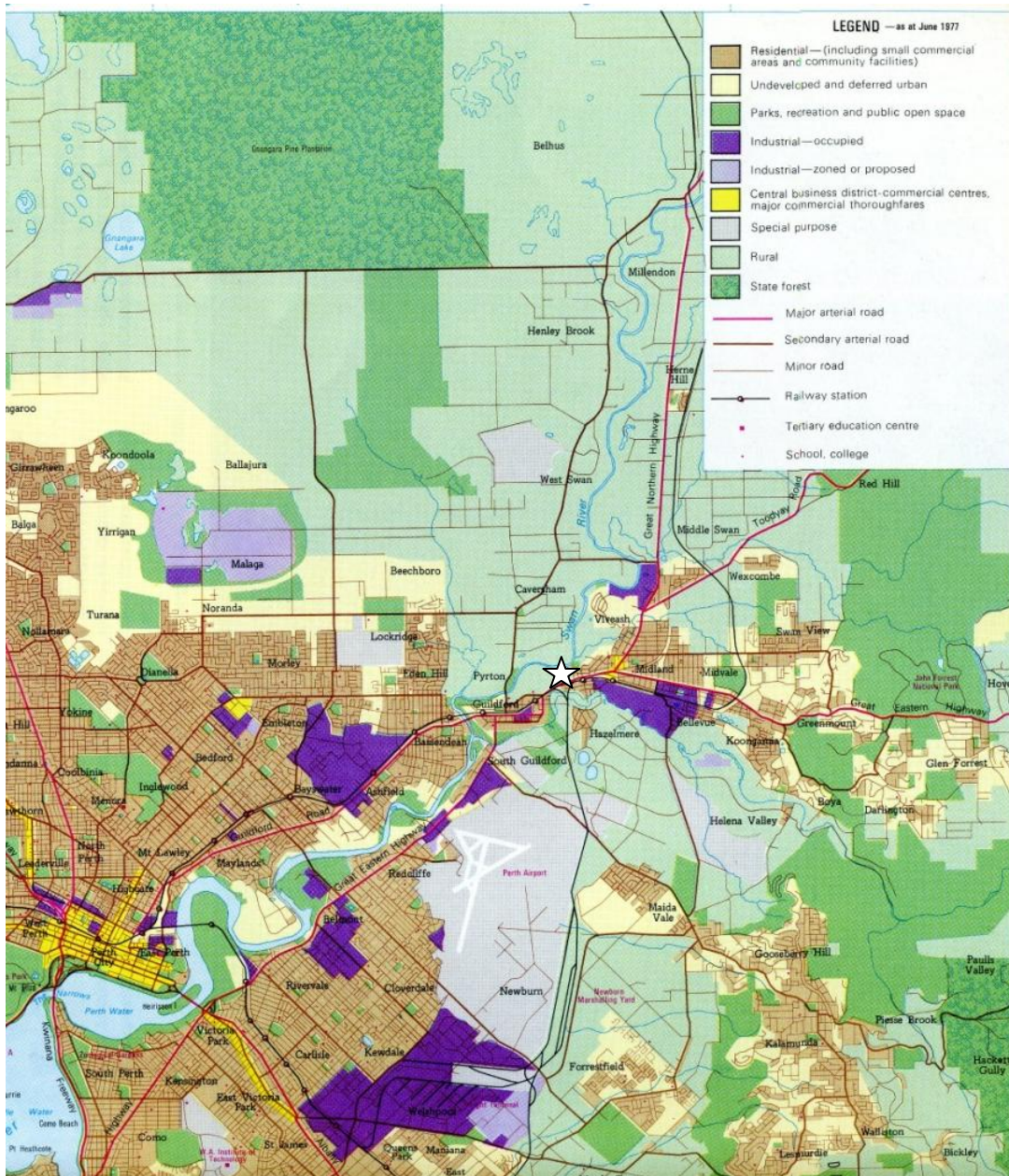
After attending the Official Opening in 2013 I decided to compile a history of the various building stages of Governor Stirling Senior High School. This publication has become more than a history.

Type Faces Used In This Publication:

General notes are written in the **Times New Roman** font. Quotations from the various sources are printed in the *Times New Roman Italic* font.

References: I have endeavoured to acknowledge all references. The principal ones were:

1. *Quartania Magazine* that published a number of articles relative to the building.
2. *NEARMAP LTD*, who provided a valuable time sequence demonstrating the school site layout before 2011 and after 2013. I subscribed to the website with this publication in mind.
3. The City of Swan Library that provided the newspaper reports of the Official Opening in 1959.
4. Batty Library that provided references to Claude Hotchin's vast correspondence that in particular revealed his commitment to schools in the Midland District.
5. The **maps of the pre 2013 school layout** that were originally used in Staff Information booklets.
6. The **current maps** of the school issued by the School Administration to staff and students.



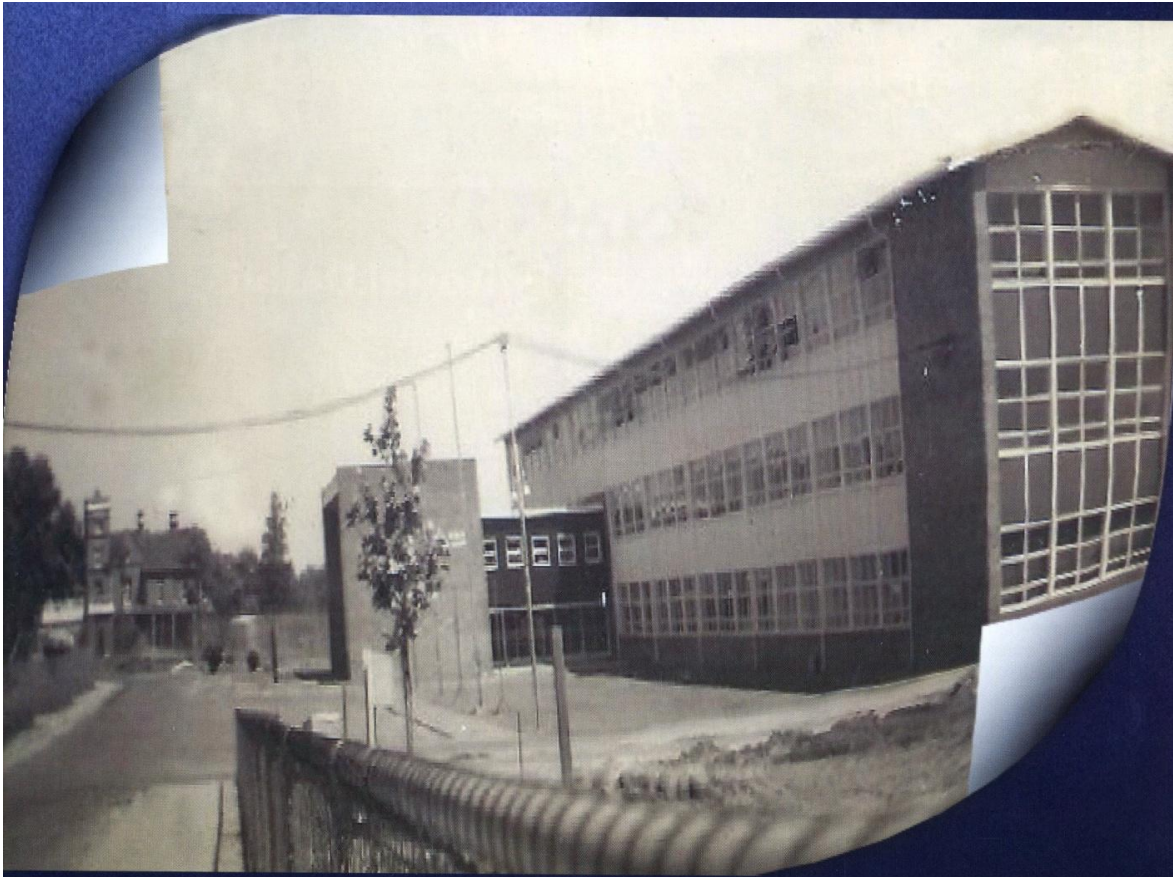
This map drawn in the late 1970s by the Cartographic Section of Department of Lands and Surveys (now known as Landgate) locates Governor Stirling Senior High School with a white star. Roe and Tonkin Highways were yet to be built.

It was extracted from a 1979 publication *Western Australia: An atlas of human endeavour 1829 - 1979* produced for the Education Committee, WAY'79 by the Education and Lands and Survey Departments of Western Australia in commemoration of the State's 150th Anniversary Celebration.

Every Western Australian school student from Year 7 to Year 12 was presented with a copy of this atlas as a sesquicentennial gift from the State Government. The official presentation was made by senior Government officials at Governor Stirling. It was planned to have complete media coverage.

Sadly there was no media presence to the mark occasion. Unfortunately people in the transport industry chose to block Great Eastern Highway at Greenmount that very day. The roadblock was deemed a far more important newsworthy event than the presentation of an atlas to school children.

THE CHRONOLOGY OF THE BUILDINGS - 1956 TO 2013



In the beginning ... Looking down the driveway towards Woodbridge House - early 1950s



The new Governor Stirling Senior High School, opened by the Premier, on the original school site in February 2013



IN SUMMARY:

1954 -1963: STAGE ONE

The full school building consisting of the main block and the gymnasium was officially opened in 1959. It was the original three storey building, commenced in 1954 with some classes commencing in 1956 in a partially completed building.

Before the 1970s, Governor Stirling accepted Senior School students wishing to complete Years 11 & 12 by sitting for the Leaving Certificate. Mostly they came from the surrounding 3 Year High Schools (Eastern Hills, Kalamunda, Cyril Jackson and Belmont). Country students from Years 8-12 boarding at Swanleigh also attended GSSHS.

1964-2010: STAGE TWO

With the changing curriculum demands, Governor Stirling began its second stage with a series of additions and alterations to the original 1959 building.

- The additional buildings were:-

1964: the establishment of an annex at Woodbridge House,

1966: the Commonwealth funded Science block,

1971: a new Library, and the Squash Courts (paid for by P&C funding),

1976: the Prevocational Centre - the final building to be erected on the site.

- The alterations and repairs to the building included:-

Converting cloak rooms into office space and small class rooms during the 1970s;

Enlarging the Canteen;

Changing floor coverings in classrooms from linoleum tiles to carpets;

Removing of double lift-top desks and replacing them with single tables;

Remodelling of the front office area that included alterations to rooms G4 and G5;

Conversion of the caretaker's residence into a House Centre;

Construction of an open air theatre located on the river bank behind the House.

2013 –: STAGE THREE

This stage commenced with the demolition of the whole site and the building of a new school during 2011 and 2012. For the two years, Lower School students were housed in the old Midland Primary School and Years 11&12 at the Cyril Jackson Senior Campus in Ashfield.

The new Governor Stirling is a two storeys facility built on the original Governor Stirling Senior High School site and was opened on the first school day of 2013.

A question has now risen - How the school will cope with the addition of Year 7s as Secondary Students?

THE ORIGINAL 1959 BUILDING



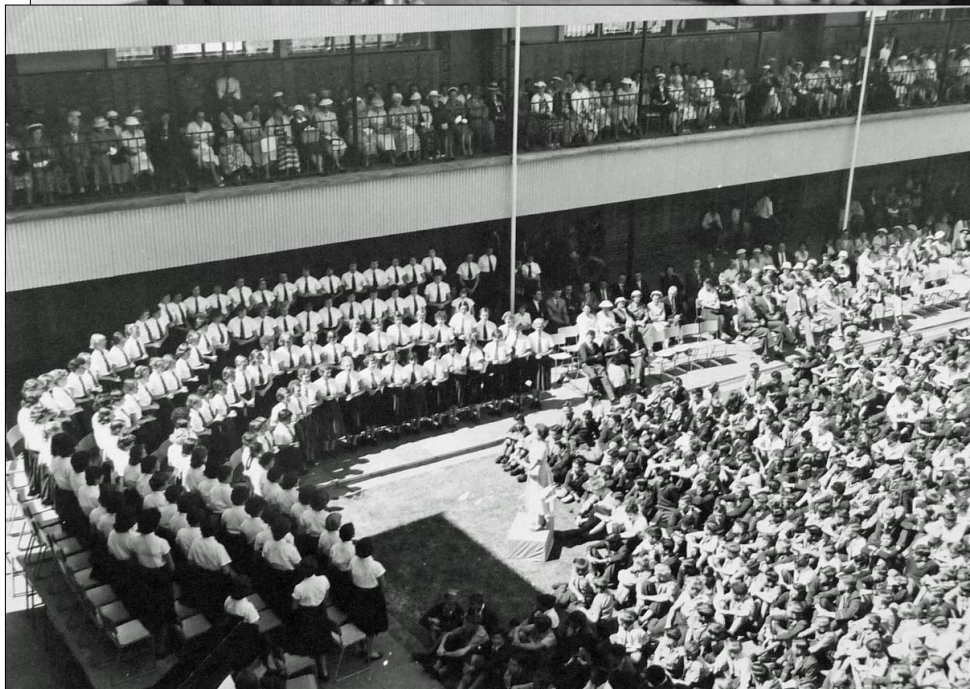
Site works began in 1954 with high school students attending Midland Junction High School (located at the old Technical School in Midland town). Progressively, students were moved to Governor Stirling from 1956 onwards with the official opening on October 28th 1959. The Minister for Education, the Honourable A.F. Watts performed the ceremony.

The floor plan of the 3 storey building provided for 30 classrooms, science laboratories, manual arts rooms, domestic science centres, music room, art room, typing room and a gymnasium. Double banks of student lockers were outside all of the classrooms on all floors.

The November 1964 *Quartania Magazine* said in an article titled '*Historical Midland School*'

“ . . . in 1956, Third (Year 10), Fourth (Year 11) and Fifth (Year 12) students moved into the first wing of the new school, the eastern and southern side as far as T3 In 1959 the school was completed. . . . Governor Stirling Senior High School was officially opened on October 28th, 1959, by the then Minister for Education, the Honourable AF Watts. GMC, MLA.”

The local weekly newspaper, *The Swan Express*, (it was in existence between 1900 and 1979), reported the occasion and included two photographs to complement the text. The photos taken in what later became known as the grass quadrangle area and will remind past students of the austere nature of the building. As can be seen in these photos, ladies always wore hats and gloves on important occasions. All students wore ties.



The top floor in the early days was reserved for Upper School students, no doubt to help overcome the crowded school site.

Lockers were located against the classroom walls. It was some years later that the benches outside the classrooms were provided.

The Swan Express, November 4, 1959, pp.1, reported on the official opening in 1959 (although first classes in an incomplete building were moved from central Midland in 1956):

“Official Opening of Governor Stirling Senior High School

Ideal weather conditions prevailed on Wednesday 28 October for the official opening of the GSSHS at West Midland by the Hon Minister for Education Mr. AF Watts CMG MLA

The very large and representative gathering was a most inspiring and encouraging sight as the 1600 students, neatly attired in the school uniform were accommodated on the quadrangle lawn and the top balcony, other parts being reserved for the many hundreds of adult visitors present.

From a colourfully decorated dais the Principal Mr. N McLeod in extending a very cordial welcome to all said “Emphasis today must be on the work ‘Official Opening’ for as most of you know the partly completed building was opened to students nearly four years ago., when at the beginning of 1956 approximately 300 students in the third fourth and fifth years were led into the school by the School Captain Michael Williamson and the Head Girl Anne Clover. In 1957 there were 770 students with 1040 in 1958 and at the beginning of this year there were 1700.

He outlined some of the difficulties involved in occupying a very large school during the course of its building operations and paid tribute to the various Government departments, to the teaching staff and to the student body for the cooperative manner in which all had faced the problems and allowed the work of the school to continue with a minimum of inconvenience and disruption.

The Director of Education Dr TL Robertson traced very briefly the growth in secondary education in the years since Perth Modern School was opened in 1911 and emphasized the rapid progress since WWII. He pointed out that there were now 14 high schools in the metropolitan area and a secondary population of over 25,000 students most of whom would receive at least two years education at secondary level while the five percent who went on to Leaving certificate in 1955 had more than doubled since then. In congratulating Principal, staff and students on past achievements he expressed his confidence in the future of the school

The Hon Minister for Education Mr. AF Watts in declaring the school officially open referred to the school’s record in the Public Examinations over the years and forecast that in 1960 the number of students presenting themselves for these examinations from this area would be an all-time record. He attributed this to the considerable development in facilities for further education and the desire of greater numbers of students to avail of these facilities – a good sign for the future.

In thanking Mr. C Hotchin for his gift to the school the Minister said: “These murals depict scenes in the early history of Western Australia when Governor Stirling was establishing the colony here. On this site on July 21 1831, Stirling erected for himself a small residence (Cottage Ornee). This school must therefore be regarded as very closely associated with Governor Stirling and in consequence it gives me very great pleasure now to name the school – Governor Stirling Senior High School” (Applause)

On behalf of the last prefects of Midland High School and the first prefects of GSSHS Michael Murray (School Captain) and (Maureen Jones) Head Girl presented to the school a shield bearing the new crest and called for three cheers for the new school – to which all happily responded.



Two Items by the second year girl's choir under the direction of Miss L Harry and a vote of thanks to the Minister moved by the Hon JJ Brady MLA and supported by Mr. V Murray, President of the P&C Association, brought a memorable ceremony to a close, after which the school was open for informal inspection by the large crowd present."

In 1990 Ms V Everett, a History teacher, wrote the following article that was published in the Quartania Magazine entitled:

"A HISTORY OF GOVERNOR STIRLING SENIOR HIGH SCHOOL

Governor Stirling Senior High School can trace its origins back to 1896, when the first government school in the Midland area was opened. The school, in Viveash Road, Midland Junction, was named Midland Junction School and its purpose was to provide an education for the children of local settlers.

It was from this small school in Midland Junction, which in 1896 catered to only 137 primary school students that Governor Stirling Senior High School has evolved. The development of Governor Stirling is directly linked to the growth of the Midland area and the increasing high school population.

Midland Junction School, a primary school at first, was re-classed as a "central school" in 1909 to become like a district high school of today, providing an education for years 1-10; students of primary and post primary level.

For the next three decades, the numbers at the school in Viveash Road steadily increased and additions to the buildings could not accommodate the 600 post primary (high school) students.

Plans for a separate high school were prepared during the late 1940s and negotiations began with C W Harper, the owner of Woodbridge Estate, to acquire land on which to construct the high school. In 1954 construction of the high school began in Ford Street, Midland. In this same year a fourth year (Year 11.) also commenced, which in 1955 became Midland Junction High School's first leaving class.

The first stage of the high school under construction in 1955 consisted of six classrooms, three science rooms and two specialist rooms. In 1956 Stage 1 was completed and the school, Midland Junction Senior High School, was opened with 320 students in Years 10, 11 and 12.

Years 8 and 9 remained at the old Midland Junction School until 1957 when the second and third stages of the high school were built. In this year 740 students attended the school. By 1958 the school had 30 classrooms, seven manual arts rooms, four specialist rooms, one lecture room and one library. Enrolment at the school had jumped to 1600 students.

In the following year, students requested that the school name be changed from Midland Junction High School to Governor Stirling Senior High School. The school received this name because it stands on the site of Governor Stirling's original cottage. Senior students conducted a competition to design a new school crest to accompany the name change. In 1960 the school population again increased when the first group of 100 students attended Governor Stirling from Swanleigh, an Anglican boarding hostel in Middle Swan. The affiliation between Governor Stirling Senior High and Swanleigh has remained ever since and now Swanleighans constitute approximately 30% of the school's population.

As a result of the increased population between 1965-1971 the school underwent several major extensions; in 1965 a science block, in 1970 an enlarged canteen, in 1971 a new library. Four squash courts were also completed in 1971, making Governor Stirling the first school in the state to have its own squash facilities. In 1990 a modern administration block was completed at the school.

During its history, students from Governor Stirling Senior High School and its forbear, Midland Junction High School have excelled academically, in sport, -and participated in many vocational and community activities."

THE GSSHS MURALS PRESENTED BY CLAUDE HOTCHIN:

There were 4 murals officially presented to GSSHS at the opening in 1959. They were first on the wall of the main entrance foyer, then after 1989, on the wall of the library (built in 1971). They were placed in storage whilst the rebuild took place.





Benjamin Witterton 2nd Colonel Dr. A. Collier Lieut. Dale 63rd Regt.

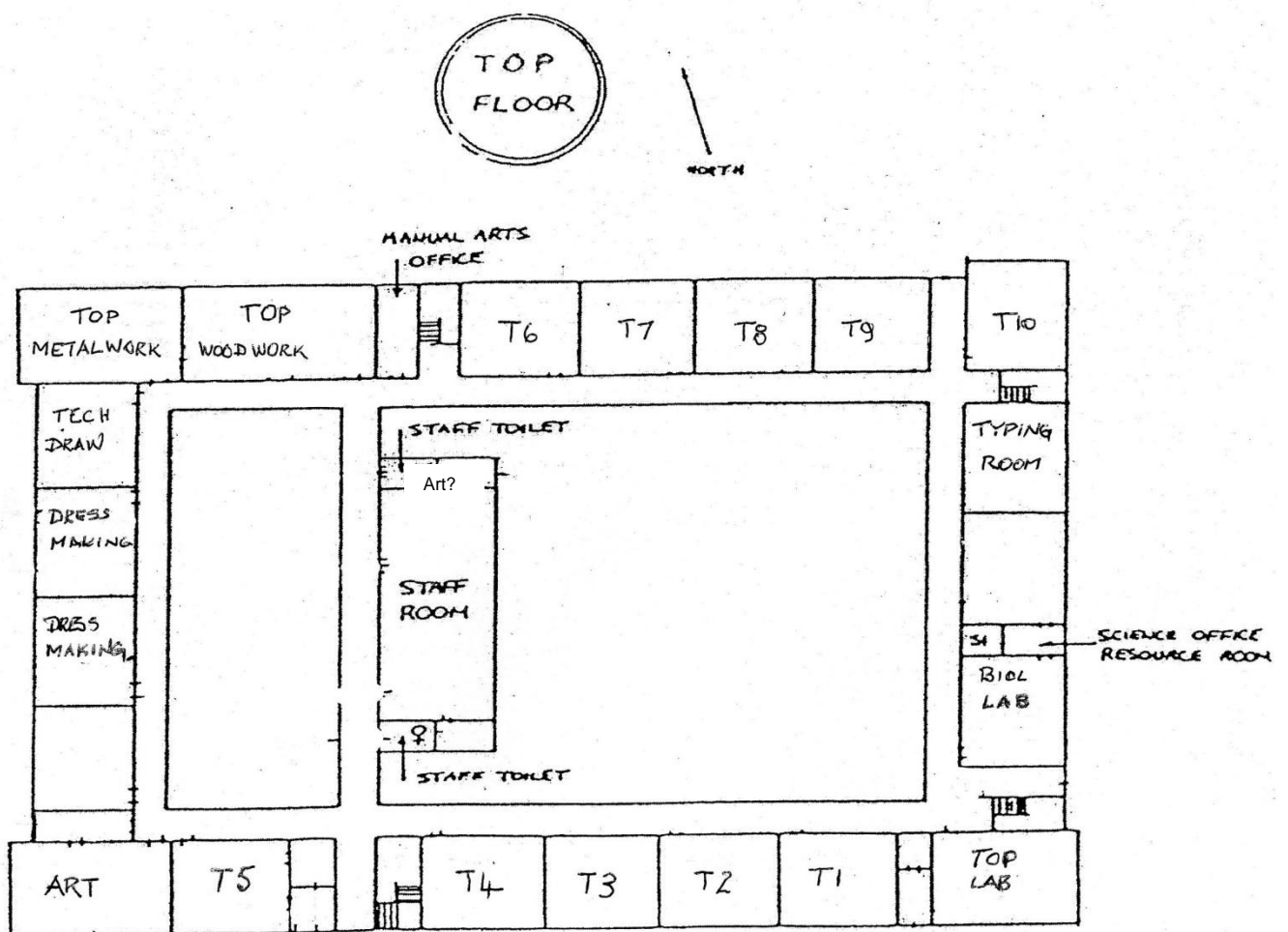
YORK 1831



LEGISLATIVE COUNCIL 1837

They have yet to be placed in the new building for public viewing.

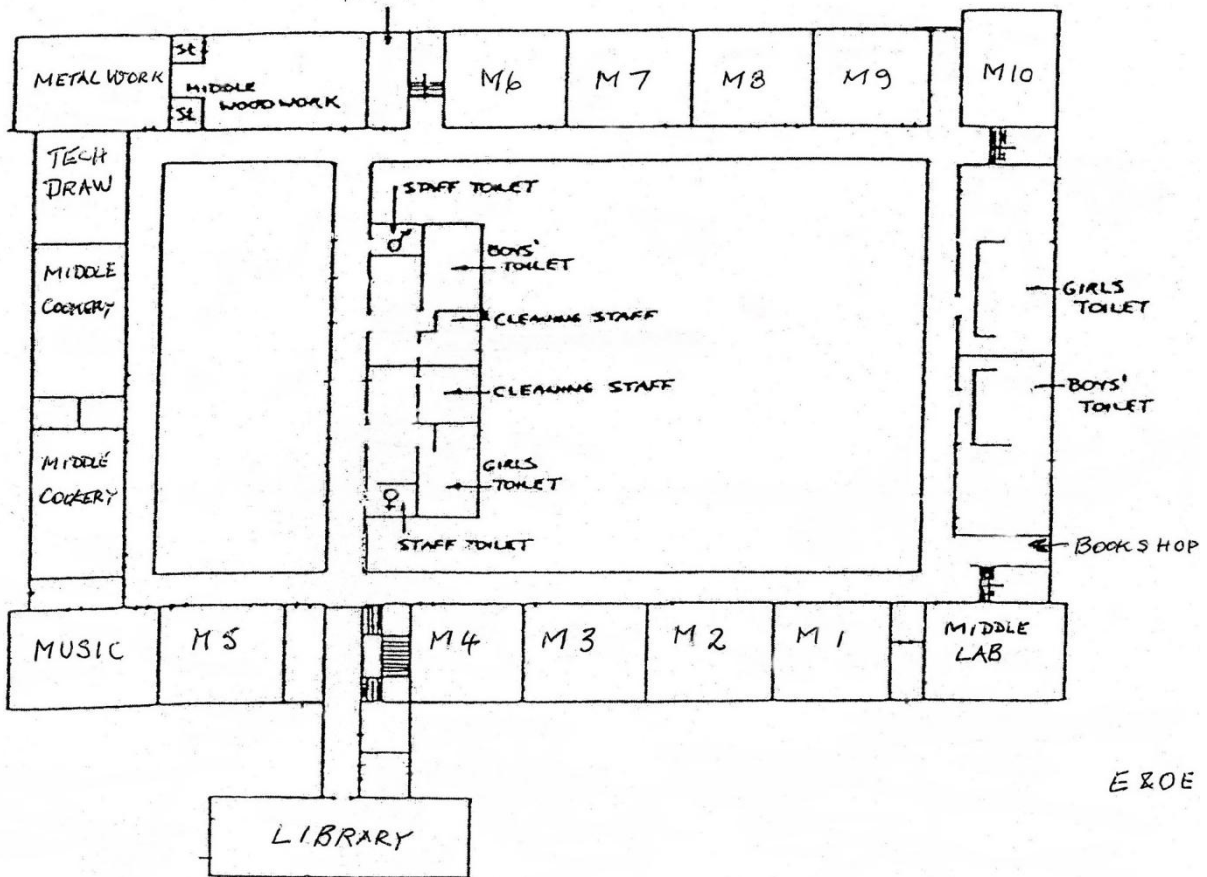
THE ORIGINAL BUILDING FLOOR PLANS



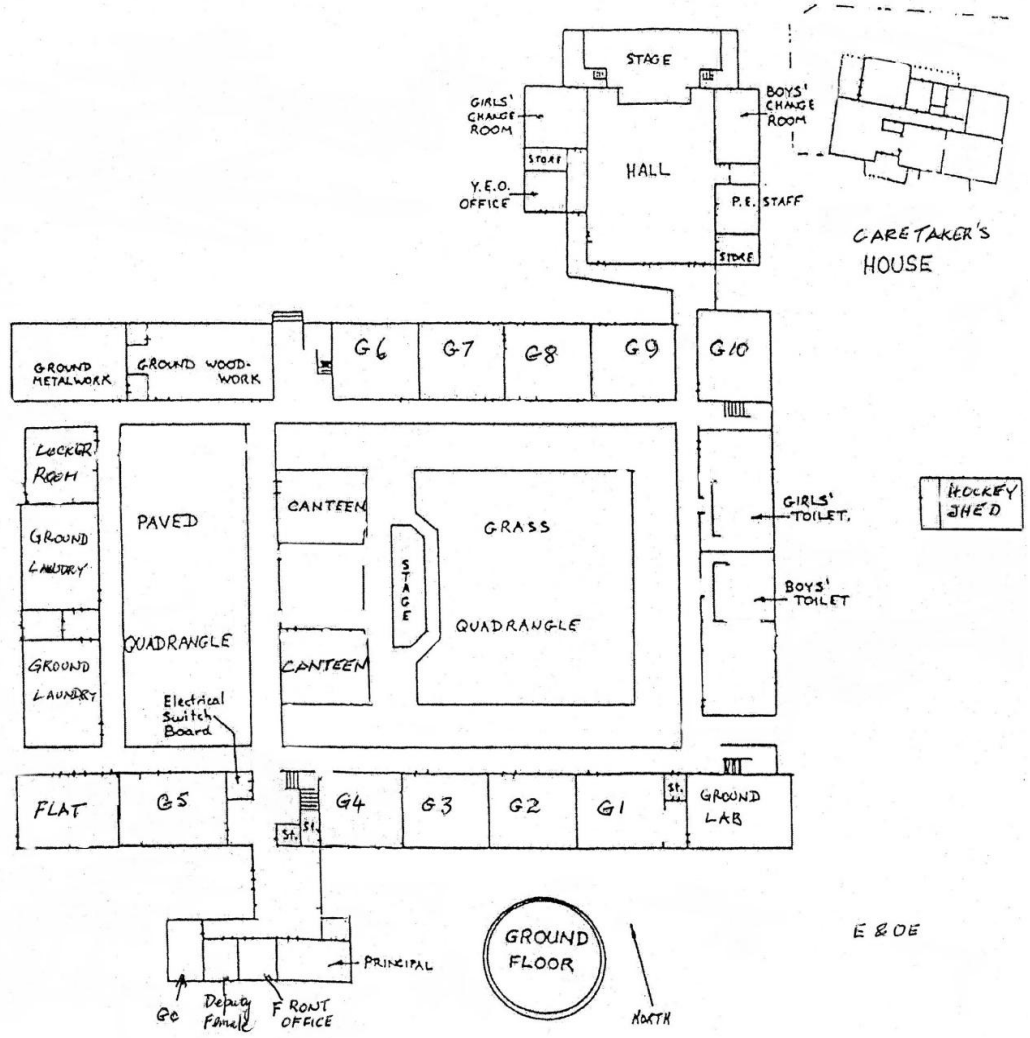
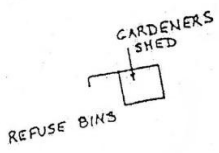
EROE



NORTH
DEPUTY PRINCIPAL



E & O E



E 8 0 E

SOME FEATURES OF GSSHS IN THE EARLY 1960s

The Timing of the day: The school was organised into eight 40 minute periods with five periods before lunch and 3 in the afternoon. School finished at 3.10 pm. Not all subjects were allocated the same amount of class time.

The School Leaving Age: Students were able to leave school once they turned 14 years of age. GSSHS was established as a *SENIOR* High School with an Upper School so that students after completing the Junior Certificate could then progress to sit for the Leaving Certificate at the end of Year 12 (at the time called Fifth Year). The Upper School (Years 11 and 12) was about equal in numbers with the three years of Lower School. The large numbers were because students from the surrounding Three Year High Schools (i.e. Years 8-10 only) viz Belmont, Cyril Jackson, Kalamunda, and Eastern Hills wishing to complete Years 11 & 12 had to enrol at Governor Stirling.

Swanleigh Hostel: This was a private boarding facility run under the umbrella of the Anglican Church. It provided a residence for around 300 country students from Years 8-12. Prior to the 1960s, Swanleigh had been the Swan Boys and Girls Orphanage.

Assembly Day: Tuesday morning was assembly day for all years in the Gymnasium. Four assemblies, each of 40 minutes duration, were conducted. Years 8, 9 and 10 were separate, and one was for the whole of Upper School. Chairs were put out for students. The Senior School assembly nearly always had a guest speaker - often ex students. Kim Beazley Snr, an ex Midland School teacher, when Federal Parliament Minister for Education was one guest speaker.

Interschool Sport: Wednesday afternoons throughout the Metropolitan area was when the Upper School teams competed against other schools. Govo had a rowing team competing in the "eights". The rowing shells were kept in the rowing shed on Marshall Park.

Caretaker's Cottage: The school had a live-in caretaker. The cottage was later converted to 'The House' and provided accommodation for the Year Co-ordinators and the School Counsellors.

Woodbridge House: Woodbridge housed 6 classes of High School Certificate (non-Junior Certificate) classes. At one stage after the Science block was built, there was a move to demolish Woodbridge to provide more facilities, but fortunately the National Trust was given charge of the historic building.

Swan River floods: Governor Stirling is the only state metropolitan high school to be located on a river bank. In 1965 and 1967 the Swan River flooded to a height just below the monument that was at the back of the hall. The rowing shed was almost completely submerged.

The 1968 Meckering Earthquake: The quake in 1968 occurred on a school holiday so there was no panic to be dealt with. The building did not suffer structural damage.

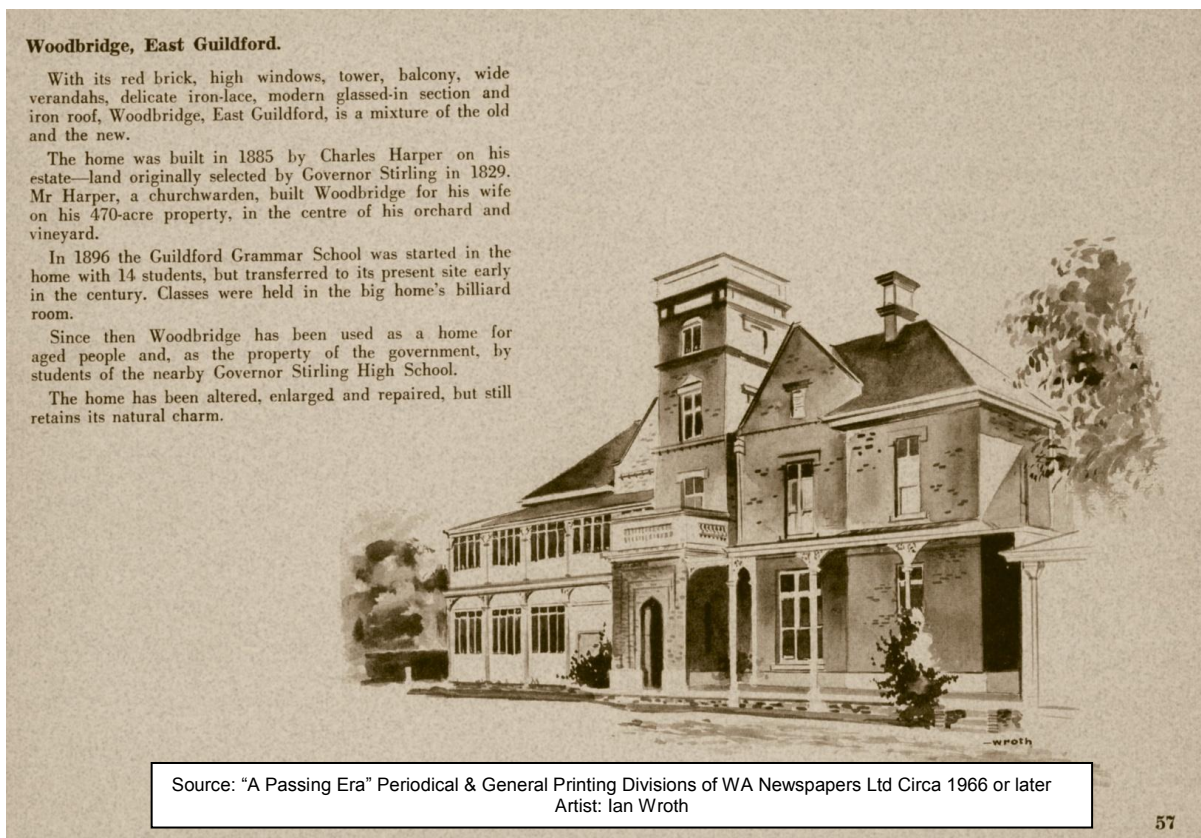
Land reclamation: Landfill rubbish was dumped at Marshall/Woodbridge Park raising the level of the surface by around a metre. Sand fill also was used to raise the Hockey field above the roadway level. Towards the end of winter, prior to being raised, the hockey field became too muddy for use.

School personalities: The school's website lists some notable ex-students. Professor Bruce Robinson (2013 Australia Day honours) is an ex- student: Mrs Janet Homes á Court was a member of 1967 Home Economics staff.

School Uniforms: Boys wore blue school blazers and girls brown blazers. Ties of course were part of the uniform. Girls were to use only the main stair case and the T10, M10, G10 stair case. Boys had to use the stairs cases G6, M6, T6 and Ground Lab, Middle Lab, Top Lab.

1964 THE ANNEXATION of WOODBRIDGE HOUSE

Quartania Magazine Editorial November 1964: “The first term of the year brought inconvenience and confusion in cramped classrooms after an unexpected increase in the school student body to about 1600. The pressure was greatly relieved when the School annexed the eighty-year-old Woodbridge House. This building, although musty and badly ventilated, is in an excellent position with regard to proximity to the School. An acute pressure on the science block is expected to be relieved soon with the construction of a new set of Physics and Chemistry laboratories to the north of the School.”

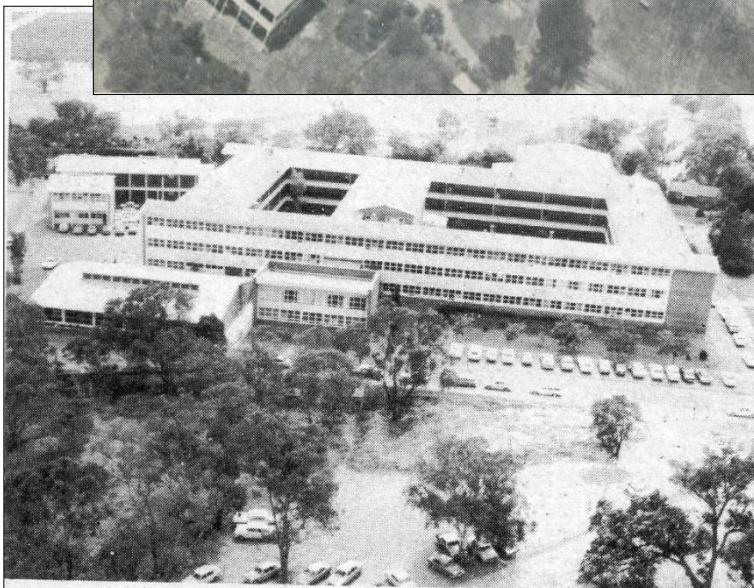
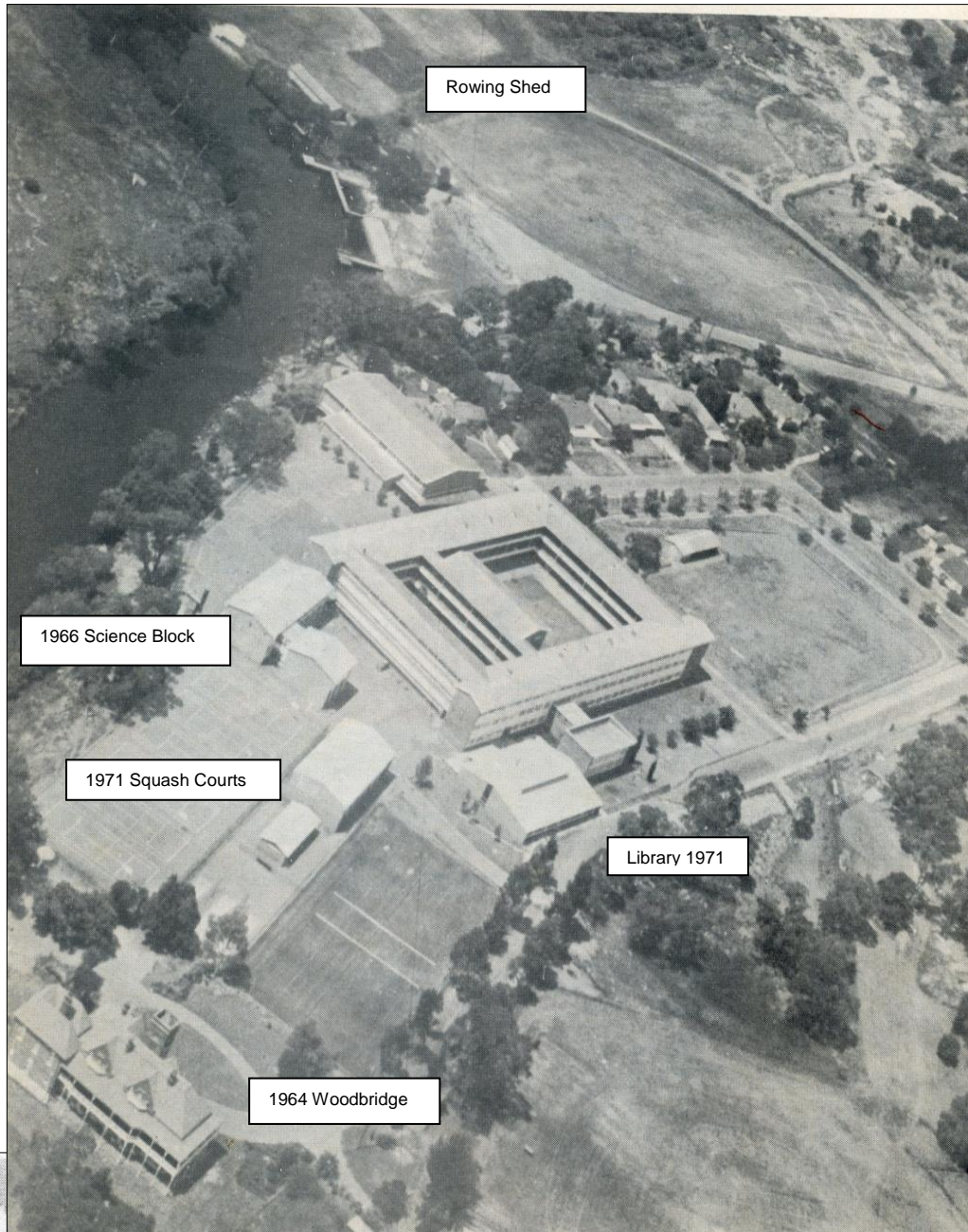


Charles Harper named the property Woodbridge after his wife's family home in England which was located in Guildford, Surrey.

Mr Harper was an inventive man who had developed a cheap fencing system known as the **Harper fence**. The Harper fence was widely used in the Avon Valley and consisted of paired posts about 1,250mm apart with saplings for rails inserted between the posts and tied with wire to prevent the posts from spreading. Later Harper collaborated with Catton Grasby to help improve some of Western Australia's agricultural areas. Some of his achievements included the development of wheat varieties suitable for Western Australian climate and conditions, pioneering the use of artesian water supplies for agricultural needs, and improved pasture through planting clover & using superphosphate. When Mr Harper died in 1912, his wife and two daughters continued to live at Woodbridge until 1921. The house was then leased to Guildford Grammar who turned the house into a boarding residence for country boys. In 1942 the boarding school was closed and the government took over the house, where it was used as an old aged home for women.

In 1964 Woodbridge became an annex of GSSHS to handle the shortage of classrooms in the main building. The Government considered demolishing Woodbridge House to make way for an oval. The National Trust took over the running of the house in 1968. After renovations, including the removal of the veranda enclosures, it was opened up to the public in 1970.

ADDITIONS TO THE ORIGINAL BUILDING:

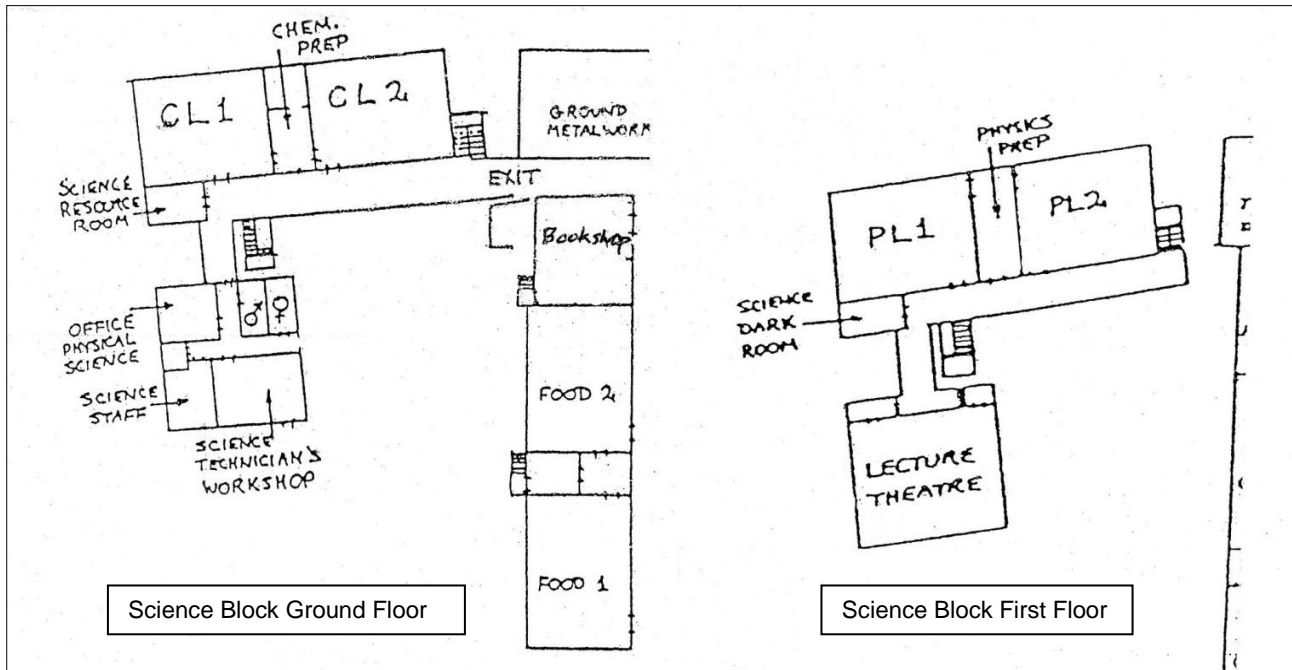


The Pre-Vocational Centre was not built at the time of the above photo.

This photo shows the dais extension in the grassed quadrangle area. The car park near the pond area had once been Guildford Grammar property.

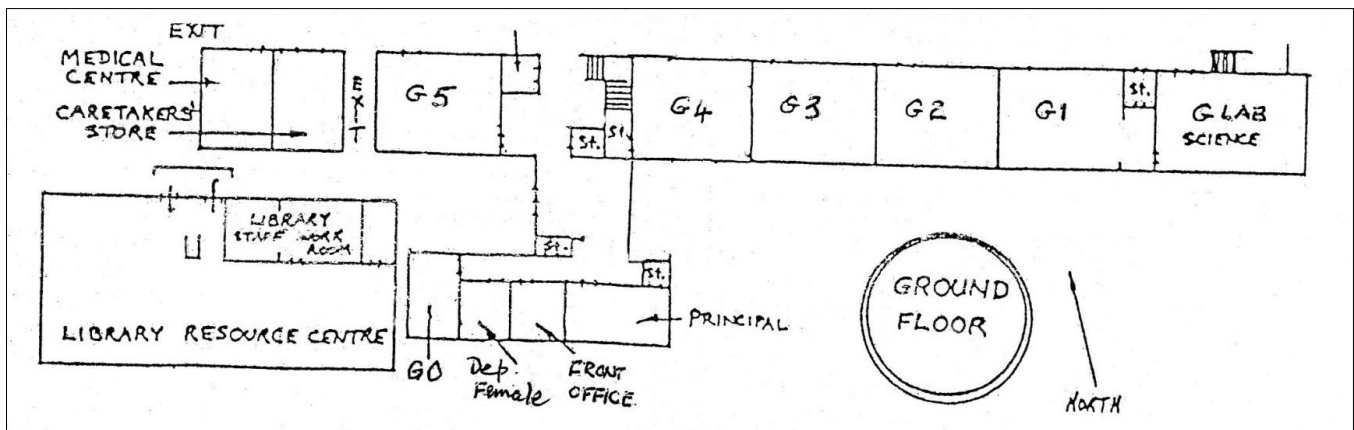
Photos courtesy
City of Swan Library

1966 THE SCIENCE BLOCK



Quartania Magazine Editorial November 1966: "Another year to be remembered by all Stirling students has almost gone. . . . So much that is new has been introduced into the school. . . . The most important of these new items to appear at the school was the Science Block which was opened midway through the year. The facilities provided by the laboratories and the lecture theatre are excellent and the new equipment available has been of invaluable assistance to every student."

1971 THE LIBRARY (and SQUASH COURTS).





The Squash Courts and the western end of the Library

The P&C paid for the squash courts. The old Library above the main office block was converted into a Language Laboratory.

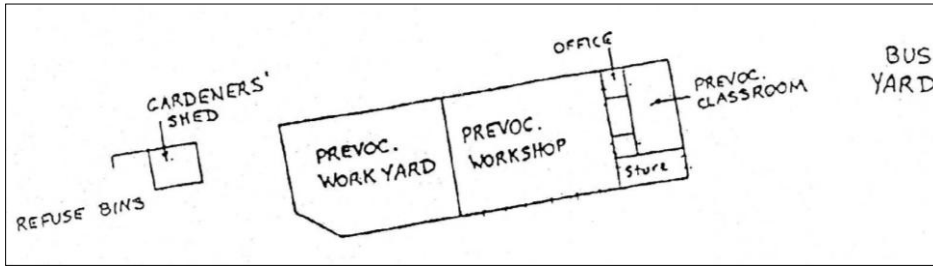
The Ground, Middle and Top floor cloak rooms were converted into small classrooms and offices.

Carpeting of Classroom Floors, Changes in Desk Styles and Removal of Lockers:

In the 1970s the original linoleum floor covering was replaced by carpets. Rooms were much quieter because the chairs no longer scrapped across the floors. Originally the school was furnished with double desks that sat two students. Therefore rooms could room more per class – up to forty. The double desks first were replaced with single lift-up lids desks, then single tables. Wooden chairs were replaced with a plastic stackable type.

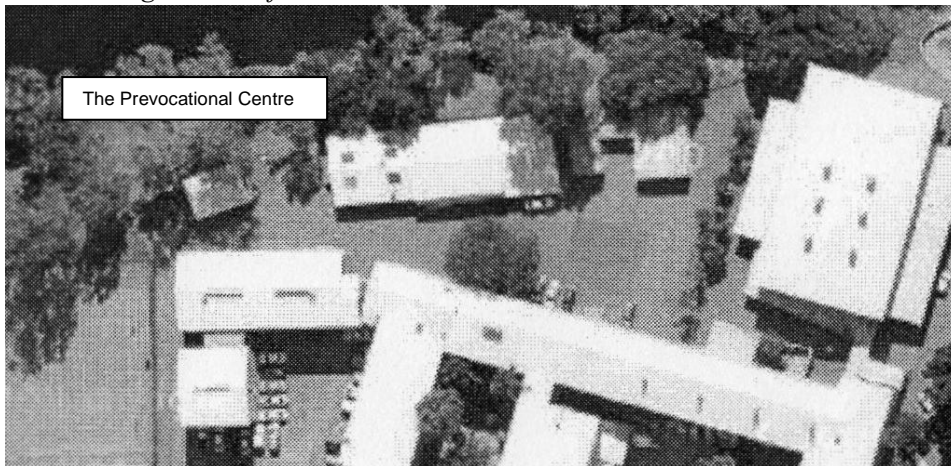
In common with other high schools, steel student lockers were outside all of the classrooms. Up until the 1970s students were required to purchase the texts they needed for the various subjects, necessitating the need for storage. Students were permitted to go to lockers only before school, at recess and lunch times and after school. The need for lockers ceased after the various Subject Departments moved into supplying classroom sets of texts. Over time, bench seating was placed in front of the lockers. Eventually all lockers were removed.

1975 PREVOCATIONAL CENTRE

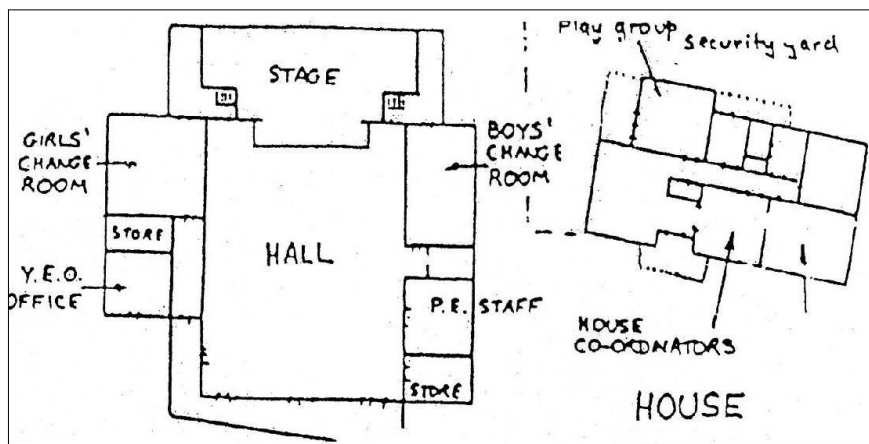


Quartania Magazine 1975:
 "Prevocational Centre a new look for '75. At last Governor Stirling has obtained a prevocational centre. The centre

is the new building which is situated on the northern side of the school between the gardener's shed and the hall. The building was constructed in 1974 . . . The centre will accommodate 24 students under the guidance of two teachers."



Caretaker's Residence: The cottage was converted to a House Centre, "The House", with accommodation for the School Chaplain, School Guidance Officer and the Year Coordinators.

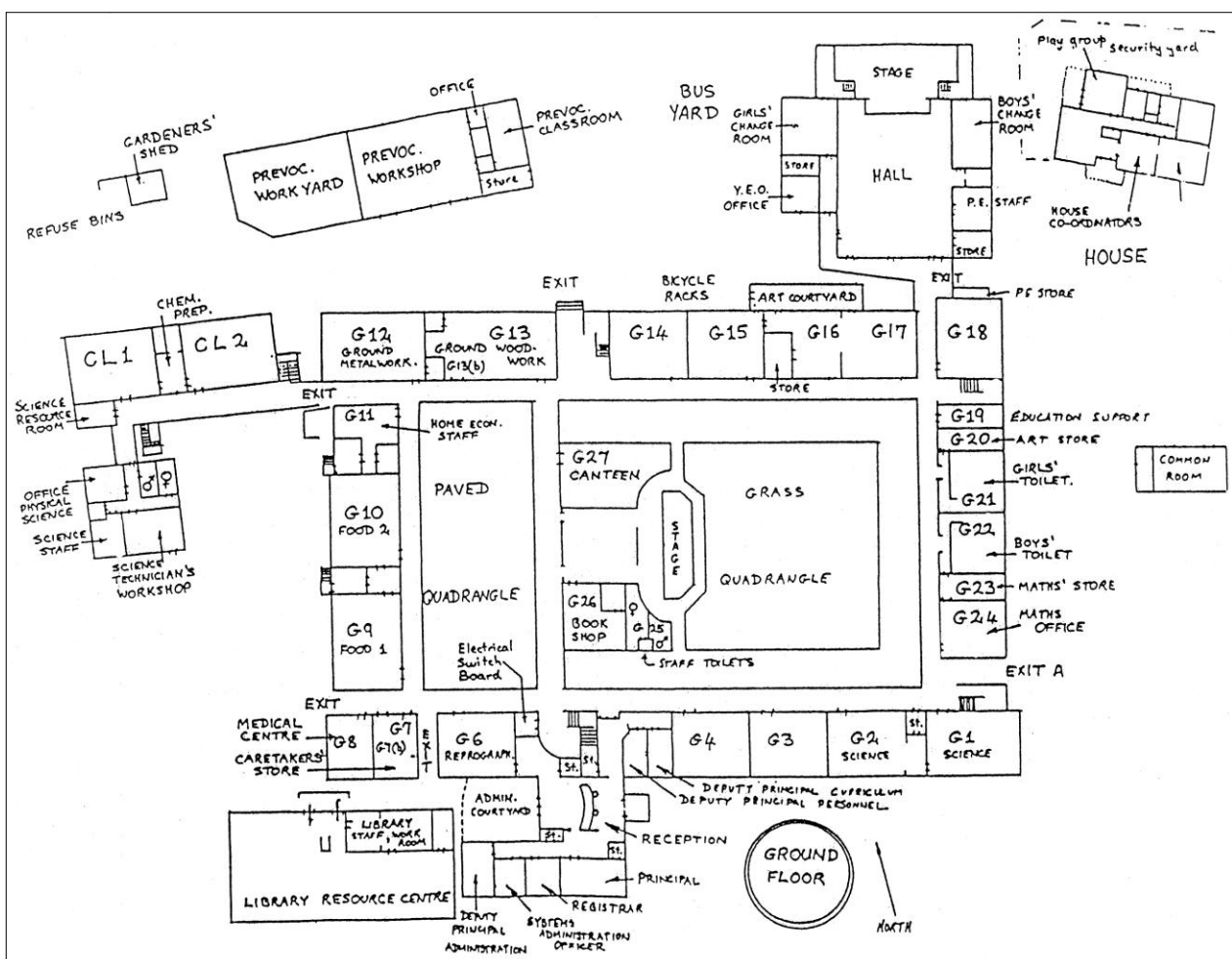


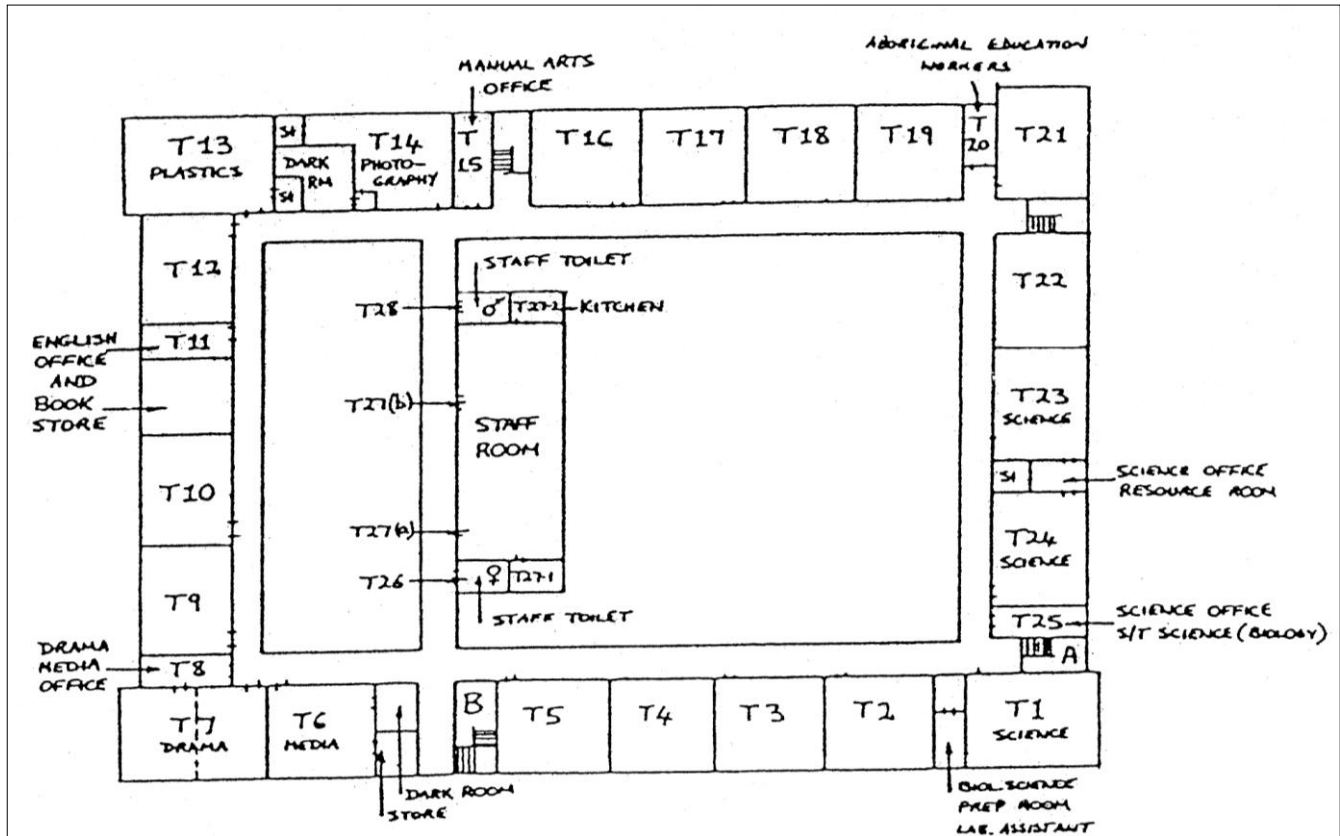
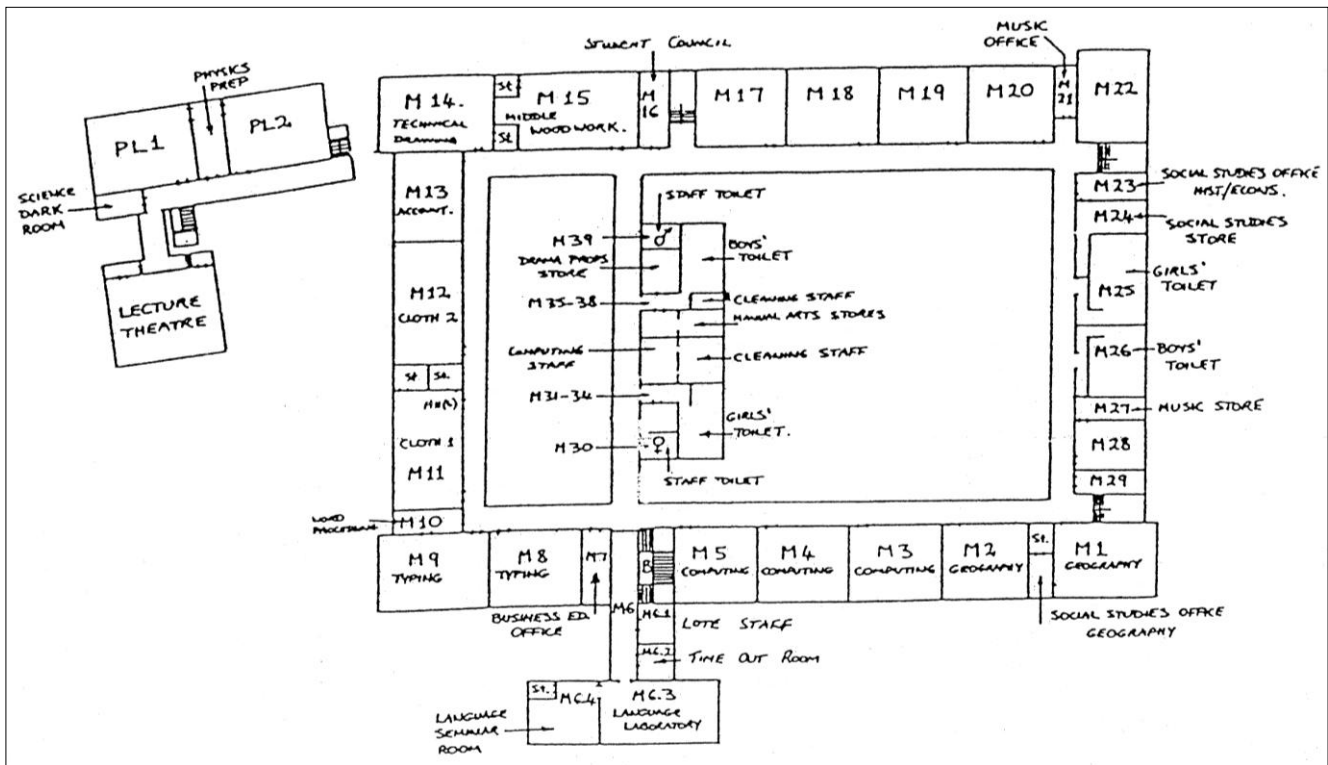
1985: THE RE-NUMBERING OF ROOMS

Rooms were renumbered in **1985** so that, for example, Middle Lab (ML) became M1, and by going around the building numbering each room, M10 became M22. However, T10 became T23 and G10 became G18, because there were a different number of rooms on each of the three floors.



THE SCHOOL FLOOR PLANS BEFORE DEMOLITION





1987: FRONT OFFICE UPGRADE

The Front Office was upgraded with the entrance being enlarged and the Terence Trowell murals dealing with the settlement of Perth (a gift from Claude Hotchin in 1959) were re-located to the 1971 built Library.

During this upgrade it was discovered that Woodbridge House's electricity was metered through Governor Stirling's main switch-board located at the foot of the main stair well. Then, it was realised that the National Trust electricity accounts for Woodbridge building had been paid by the Education Department since 1968. Also, Guildford Grammar School had benefited because their Deputy Headmaster's House too was serviced through the Woodbridge sub switch board.

3 Deputy Principals: Until 1989 the School had a male and a female Deputy Principal. After this time, the Education Department removed gender based appointments. Also, the School qualified for three Deputies, one to manage student pastoral care, one to over see curriculum courses and one managed the timetable and the teaching staff. Two were located in the converted G4 and the 'timetable Deputy' in the Guidance Officer's room that had been in the front office area.

Social Studies and LOTE Staff: Because the demand for Languages had reduced in the 1990s, the LOTE Staff was accommodated in with the Social Studies Staff in the enlarged staff room M23. M23 originally was one of the toilet/cloakroom conversions (the wall between M23 and M24 was demolished in 1996).



The front of GSSH and the elevated Hockey field

1990s Removal of asbestos roofing: in 29 October 1989 *The Echo* reported

CONCERN OVER SCHOOL ASBESTOS

Asbestos roofing at Governor Stirling Senior High School was the focus of Teachers Union and Health Department attention last week. "The main concern is the possibility of contamination leaching down from the roof," said Teachers Union Occupational Health and Safety Organiser, Kelvin Devine. He said a recent German study revealed that it was possible for asbestos to leach downwards and become airborne. To date, attempts to persuade the Ministry of Education to monitor the situation at Governor Stirling had proved fruitless, "Asbestos is such an obvious hazard. If there is the slightest worry, we shouldn't waste time. Without the use of a monitoring device, we can only be fearful"

School Principal Michael Detuik said extensions and renovations at the school earlier this year had involved the removal of asbestos roofing. "We had the full-blown committee here- unions and health officers." Mr Detuik said he was not concerned about a current health problem at the school: "I will leave it in their capable hands,"

While broken sheets of asbestos have previously been the only serious cause of worry, the recent German study has raised new concerns. Last Friday, a representative from the Department of Occupation and Health Safety visited the school and found no cause for concern. "The asbestos is three storeys high and any emissions would be washed into the gutter and discharged into the drainage system," said a spokesman. "Our experience suggests that static asbestos does not give off 'fibre emissions at a recordable level."

However, he said that if there were sufficient anxiety over the presence of the asbestos, the Department would be prepared to undertake monitoring at the school. It is likely that a government working party on asbestos cement products will, at some stage, be examining the situation at Governor Stirling Senior High School.

The asbestos roofing was replaced during the 1989-90 summer holiday period.

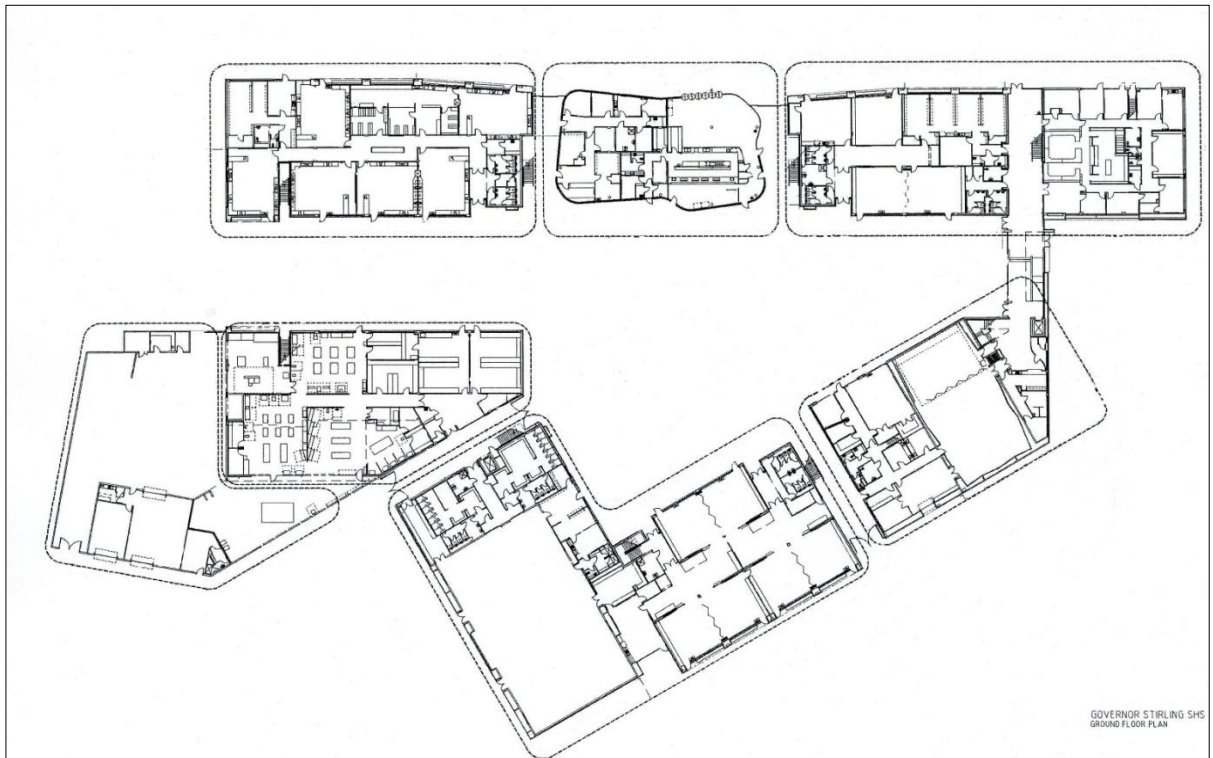
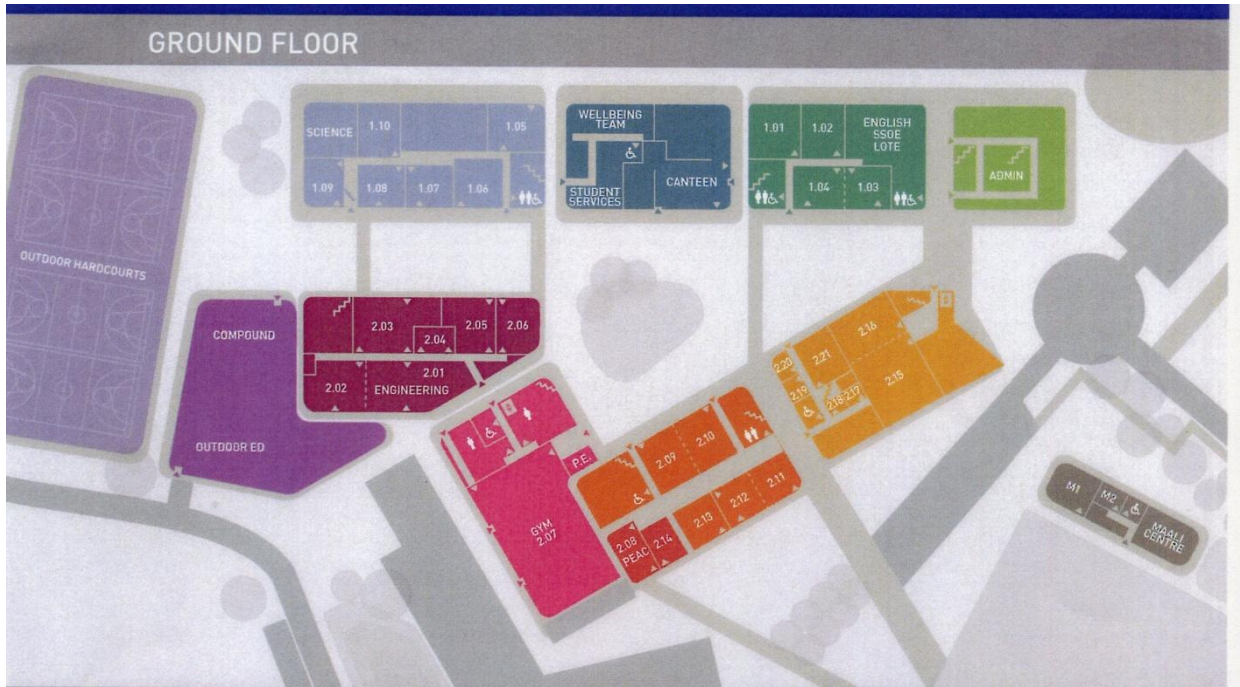
The new building (June 2013): a *Nearmap* photo

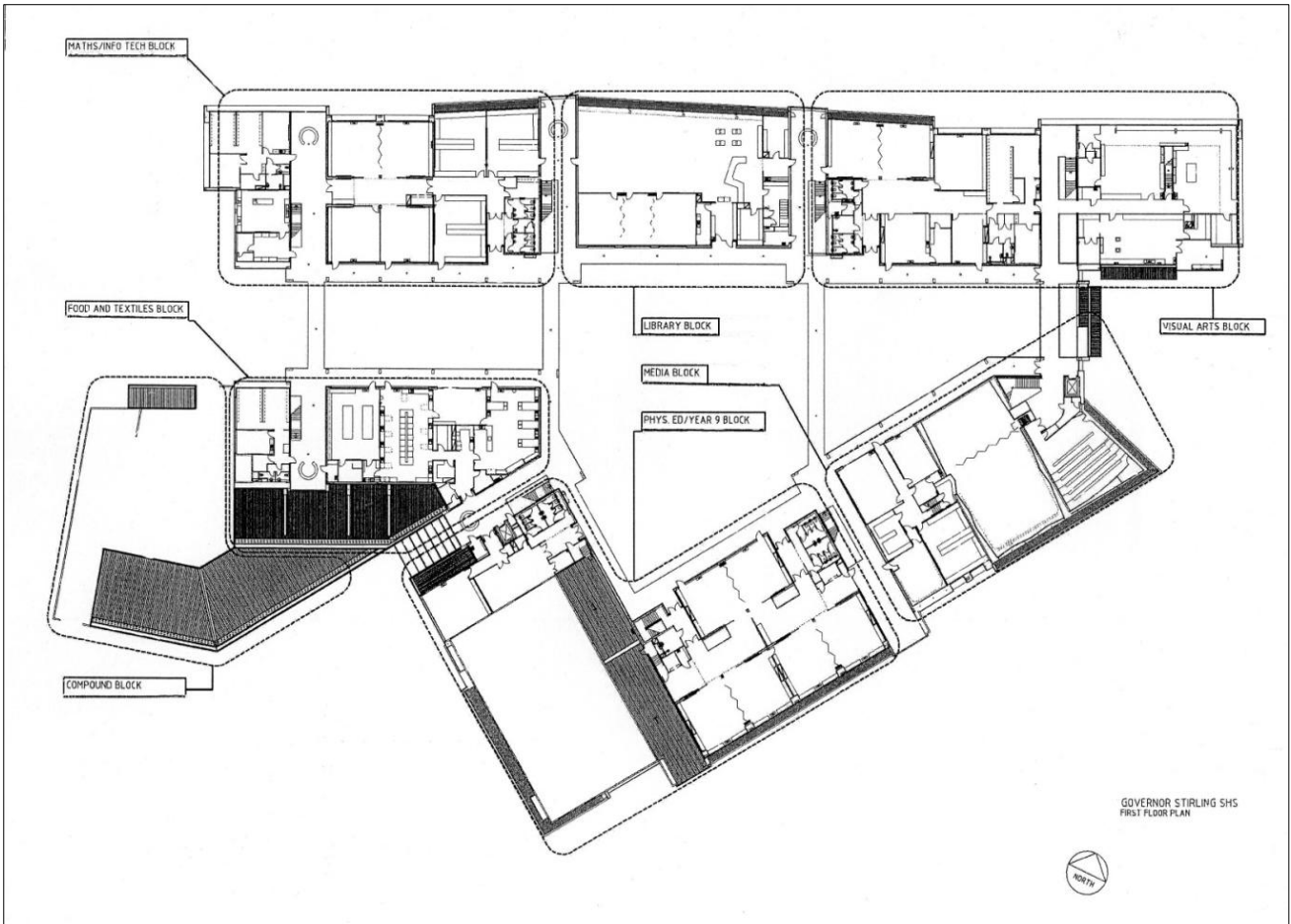


A *Nearmap* photo (November 2010): the old building on about the same scale.



THE CAMPUS MAPS





Sir CLAUDE HOTCHIN O.B.E

Governor Stirling Senior High School was not the first school in the Midland District to benefit from the generosity of Sir Claude Hotchin O.B.E. Evidence of this fact I discovered when searching through his papers that had been deposited in the JS Battye Library of Western Australian History Private Archives by Mr S.W. Thompson and Mrs Margaret McPherson - Manuscript Number 1238 (MN 1238). The amount of holding space taken by the Hotchin papers is 3.20 metres.

Briefly, Sir Claude Hotchin (1898-1977) was a South Australian who left school when 11 years old to work for Clarkson Ltd Hardware. He married the boss's daughter and came to Western Australia in 1925 to manage the Western Australia branch of Clarkson Ltd. Eventually he established Clarksons (WA) that he sold in 1950 and retired.

Quoting from Battye Library's Collection Listing notes on Claude Hotchin's papers, the Library notes, in part, said that Claude Hotchin:

'devoted his life to collecting art and encouraging young West Australian artists as well as those from other states . . .

In his life time he gave Royal Perth Hospital 394 works of art. He bequeathed the hospital a further 123 works. He also made a bequest of \$10,000 to the Art Gallery in 1972 which established the Sir Claude Hotchin Art Foundation.

He was a staunch member of the Methodist Church. He belonged to Perth Rotary Club and was a founding member of the Crippled Children's Society of Western Australia. From 1947-1964 he was a board member of the trustees of the Public Library, Museum and Art Gallery and the first Chairman of the Art Gallery. He also served on the Senate at The University of Western Australia. He was patron, benefactor and committee member of many more associations. His many interests are reflected in the files at Acc 4570A/269-414.

He was in great demand as a speaker. He painted and also wrote a great many poems. He received his O.B.E. from the Queen in 1967.

Claude Hotchin bought his first painting in 1935 in Sydney. It was Norman Lindsay's "Mutiny". It is now in Royal Perth Hospital. From that time on he vowed that he would try to collect paintings and encourage artists whenever he could. It has been written that in the period of 40 years until his death in 1977 he bought an average of one painting each week to give away to some gallery or institution.

He was obviously a very busy man and his papers make quite a large collection. He had his own filing system which has been kept intact. He wrote notes on anything he could lay his hands on, scraps of paper, old envelopes, brown paper bags and notes for one speech on the back of a large map of Australia. '

By using The Battye Library's digital camera facility available for the use of researchers, I made copies of the Claude Hotchin Collection of letters relative to the Midland District in general and Governor Stirling in particular.

No where in the correspondence that I viewed was any reference made to the person who took the initiative and approached Claude Hotchin to ask him if he would fund the commissioning of Terry Trowell. Neither was there a record of who approached Terry Trowell himself, or even who suggested what the subject of the paintings should be.

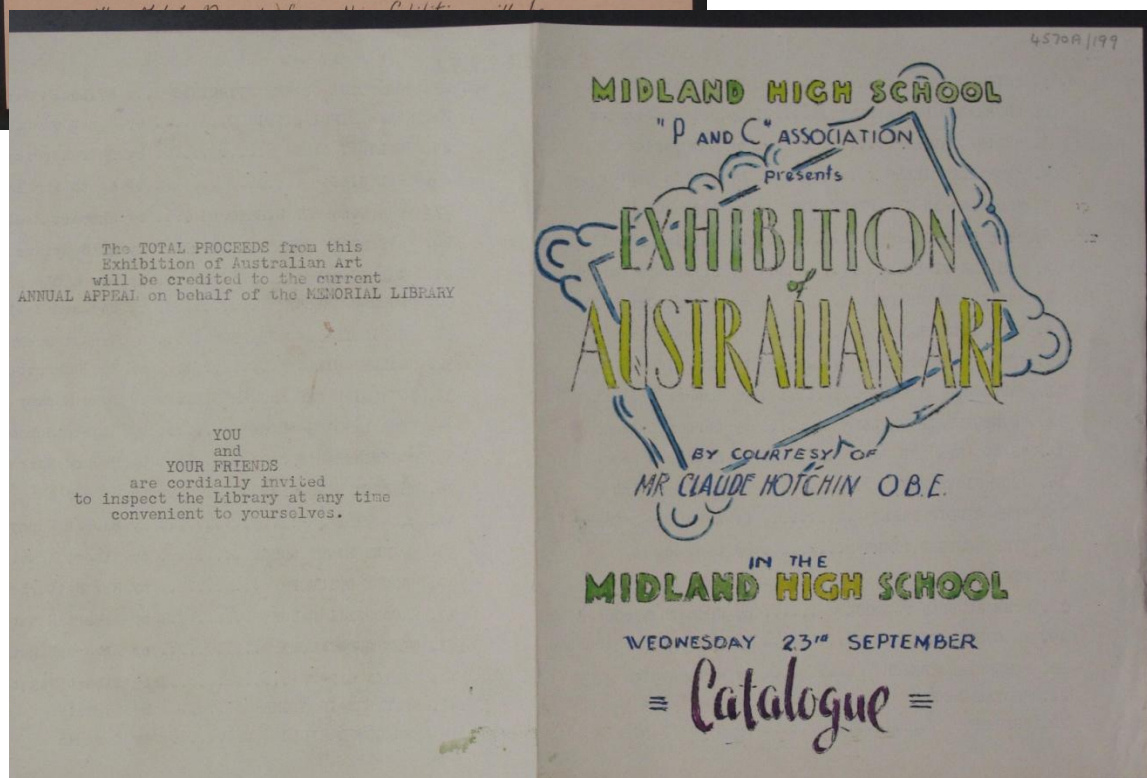
Another unanswered question is who suggested that the paintings should be placed in the new Midland High School.

It seemed to me that the more information I unearthed, more questions arose that were in need of answers.

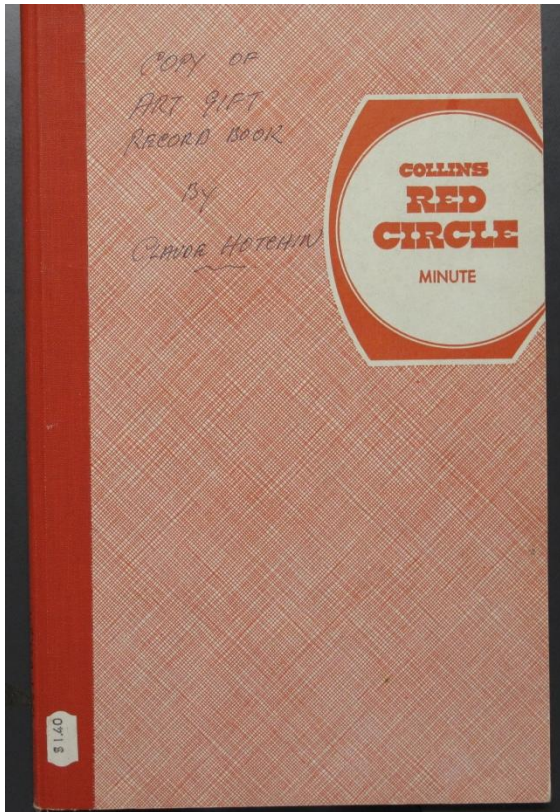


First, I observed that Claude Hotchin had been supportive of the Midland High School for some years prior to the building of Governor Stirling as evidenced with the letter written in November 1951 by G Harry, Secretary of the Midland High School P&C Memorial Library Committee, expressing the Committee's appreciation of his support. (SL Ref: 4570A/403/5 MN1238)

Also included in the Archive is this 1951 Exhibition Programme that comprised the 40 pictures that Mr Hotchin had in his collection. I would imagine an entry fee would have provided the funds that went towards the Memorial Library funds. (SL Ref: 4570A/199/4 MN1238)

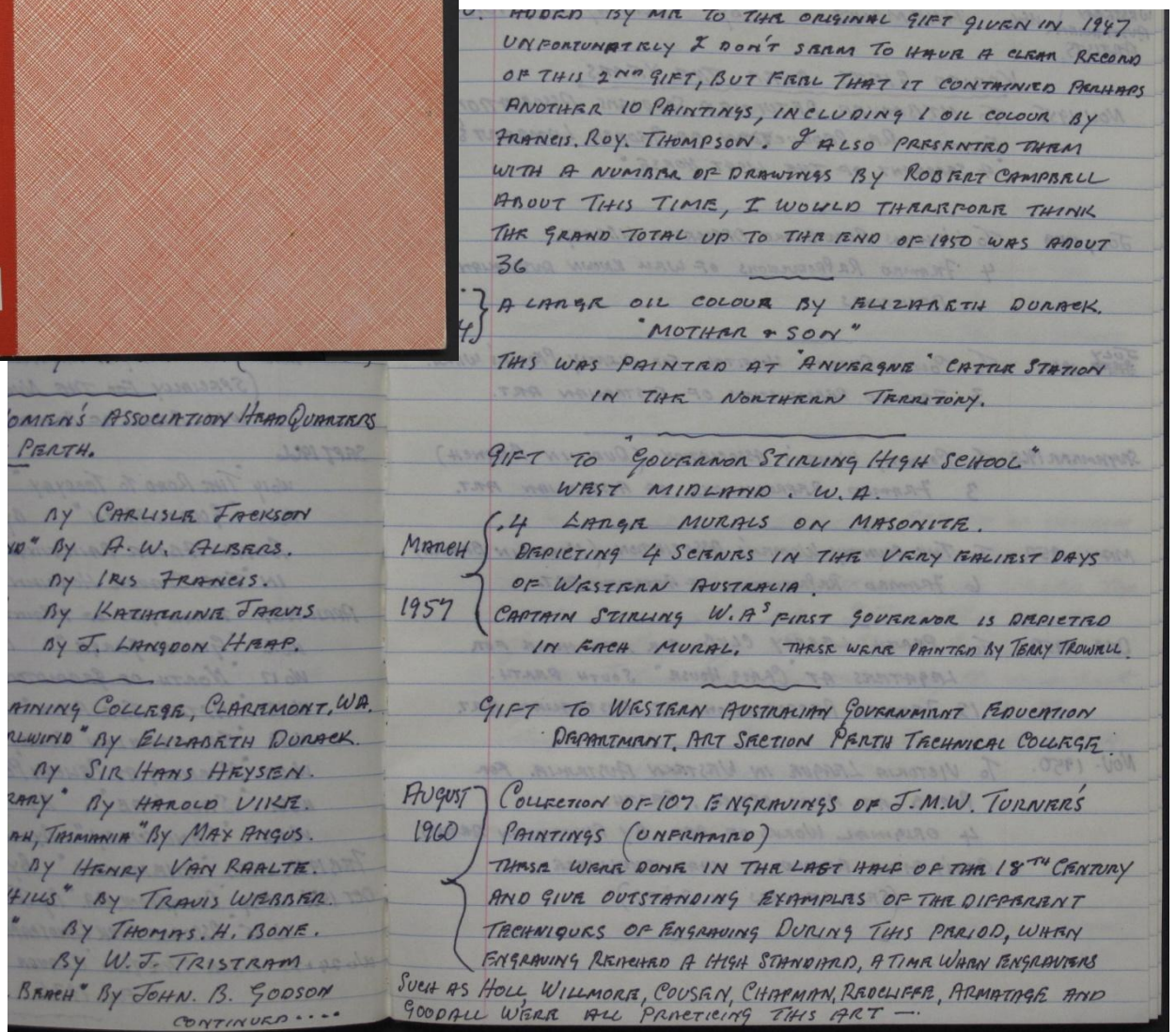


Likewise an entrance fee would appear to have been the fund raiser from the 1953 Exhibition of Australian Art - 44 artists included Sir Arthur Streeton, Elizabeth Durack, Rupert Bunny, Sidney Long, Hans Heysen and 4 Albert Namatjira paintings. (SL Ref: 4570A/199 MN1238)



Importantly, Sir Claude recorded his gifts in an Art Gift Record Book. At some stage before depositing the Hotchin papers, his life-long friend Mr S.W. Thompson copied into the "Collins Red Circle Minute" book pictured here the record Claude Hotchin made of his gifts.

In the book are the details of the gift to Governor Stirling that is dated as March 1957.



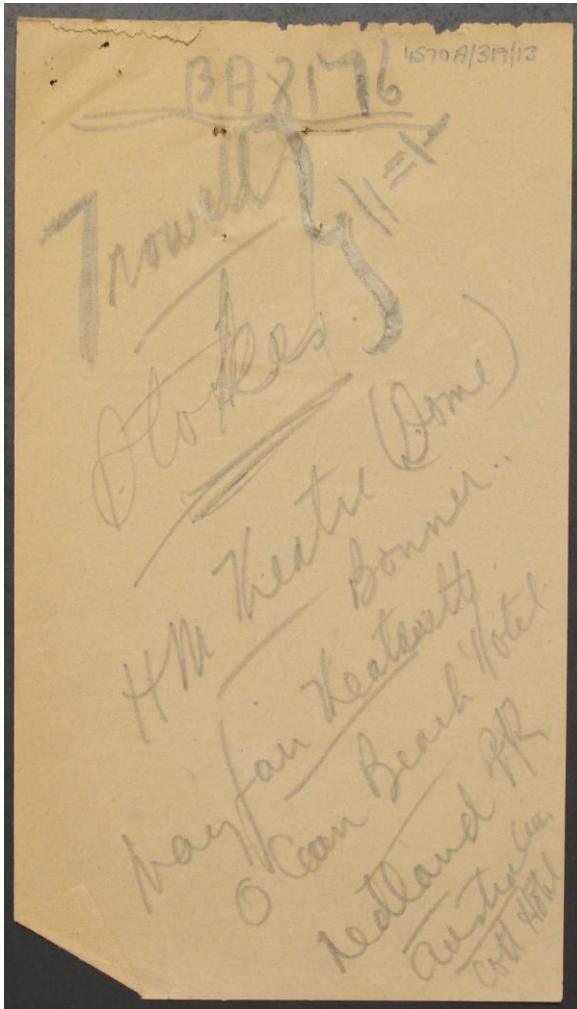
(SL Ref: 4570A/254 MN1238)

March 1957

EXTRACT FROM COPY OF ART GIFT RECORD BOOK BY CLAUDE HOTCHIN
(Copied by his life-long friend Stanley W. Thompson)

GIFT TO "GOVERNOR STIRLING HIGH SCHOOL" WEST MIDLAND. W.A.
4 LARGE MURALS ON MASONITE. DEPICTING 4 SCENES IN THE VERY EARLIEST DAYS OF WESTERN AUSTRALIA. CAPTAIN STIRLING W.A.'S FIRST GOVERNOR IS DEPICTED IN EACH MURAL. THESE WERE PAINTED BY TERRY TROWELL

The correspondence relative to Governor Stirling that commenced in April 1955 indicates that initially Claude Hotchin was unaware of Terry Trowell's talents.



When I examined the Archives in 2013 I did not think to ascertain who originally commissioned Terence Trowell to paint the murals. Therefore I did not look for the initial communication with Claude Hotchin that prompted Mr Stokes, the President of the *THE WESTERN AUSTRALIAN HISTORICAL SOCIETY (Incorp)*; to write on the **22nd April 1955** under the heading *Stirling Murals to be completed under a Claude Hotchin Bequest* to assure Claude Hotchin that Trowell's artistic skills would be of satisfactory standard.

This picture of Claude Hotchin's jottings on the scrap of paper (SL Ref: 4570A/319/12) is typical of his habit of making notes on the nearest piece of paper available. I consider it as proof that he made phone calls immediately after receiving Mr Stokes's letter (SL Ref: 4570A/319/14 MN1238) in order to confirm the statement made by J Stokes in the letter that recommended Terry Trowell to Claude Hotchin.

"There are many examples of Mr Trowell's work in the metropolitan area, including murals, panels and decorations at His Majesty's Theatre, Fremantle Hospital, Mayfair Theatre, Lady Lawley Cottage, Australia Hotel, O.B.H Cotteloe etc. I am enclosing a sample of Mr Trowell's work "The Round House, Fremantle" which is one of

the illustrations Mr Trowell did for a Local History book of mine published in 1949"

The next day (**23rd April**) the Historical Society Secretary Mr Chate wrote (SL Ref: 4570A/319/17 MN1238) expressing the Society's appreciation of Mr Hotchin's

generous gesture in meeting the cost (£100) of a set of murals, five, with Captain Stirling as the central theme

and that

the murals will be on display at the Society's Exhibition in the Perth Town Hall for 13th to 17th June. They will then, as a Claude Hotchin Bequest, be handed over to the Education Department with the proviso that the murals will be placed in the new Stirling High School at Guildford when the building is completed.

Mr Hotchin noted on the letter, after underlining Stirling High School,

*"Purchased these 4 Murals & officially wrote Director of Education presenting them to the Education Dpt which they accepted later **but am told School is not going to be called Stirling High School after all CH**"*

On 15th June 1955 Claude Hotchin visited the Society's Historical Exhibition in the Town Hall. The next day he wrote to the President enclosing a cheque for Mr Terry Trowell and asking the Society to take charge of the murals until they required by the Education Department.

In his letter he gave permission for the murals to be loaned to UWA. Also he expressed his desire to present them to the new Midland School.

On the 16th June he wrote to Dr Robertson (Director of Education) the following (SL Ref: 4570A/319/18 MN1238)

I called yesterday at the Historical Society's Exhibition at the Perth Town Hall to view the four Murals painted by a Mr Terry Trowell, which are based on some of the incidents connected with Captain Stirling and the very early days of Western Australia.

I would like you to know that I have to-day purchased this group of four Murals, because I feel that they are documentary and at the same time inspirational to all Western Australians and particularly to the children of our State.

*It is my desire to offer them to your department as a gift to the children of Western Australia, I feel that they would be particularly suited to a new school now being built in the Midland Junction area and **which I did hope would perhaps be called the Stirling School.***

At the moment the Murals are in the hands of the Historical Society, who have also asked me to allow the University of Western Australia to have them for a short period, however, when you are ready for them, I will have the greatest pleasure in handing them over, if you would care to accept them.

June 30 saw him write to 'Mr Trowell' (SL Ref: 4570A/319/19 MN1238)

I have been in touch with Dr Crowley, of the University of Western Australia and have arranged for you to pick up those 4 Murals whenever you care to do so, however Dr Crowley said that the Students were very interested in them and if you could leave them for say another fortnight, he would like it. I would therefore suggest that you pick them up about the 14th of July, Dr Crowley suggests that when you call at the University, all you will need to do is to ask at the main office to be directed to Dr Crowley's Office, should he not be in his office or hard to locate, he suggests that you take the four Murals from his room and just leave a message on his desk that you have been and all will be well.

I am enclosing the form which I want you to sign in regard to the copyright of the four Murals, if you will kindly sign and get your friend to witness, you could post same back to me with a receipt for the £100. which I have sent to you via Mr Stokes in payment for the 4 Murals

It wasn't until March 1957 that Dr Robertson wrote to Mr Hotchin (SL Ref:4570A/319/{no accession number} MN1238) to tell him that the building was ready to have the murals fixed to the wall, referring to the building as

the Midland Junction High School

and that

The school is developing into a very fine building and I think will be enhanced by the display of the Hotchin murals.

B Crisp comments:

- Dr Robertson in his letter dated 6th March 1957 should have referred to the murals as ***the 'Trowell' murals***, not as ***the 'Hotchin' murals***.
- The school was made to wait until 1959 before learning that it was to be called Governor Stirling Senior High School. It is my opinion that Sir Claude Hotchin was, through his correspondence with the Director of Education, the reason that Midland High School officially was named Governor Stirling.



TERENCE TROWELL: ARTIST

Neither *The Swan Express* nor *Quartania Magazine* gave any detail of the artist responsible for the murals donated by Mr Claude Hotchin at the Official Opening in 1959.

In November 2012 I did a web search for the artist whose name I remembered as 'Trowell'. I read with interest a blog by Kevin Patrick (PO Box 1055 Camberwell Victoria 3124) with the email address of buzzproductions2001@yahoo.com.au It was headed:

Comics Down Under Profile of Terry Trowell - Comic Book Artist Friday, March 12, 2010

In part it said:

The author would like to thank Sally-Anne Trowell and Mark Trowell for their generosity of time and invaluable assistance in the preparation of this article, as well as Graeme Cliffe for his editorial comments and advice. However, any errors and omissions are the author's own

There is just one reference to Terry Trowell to be found in John Ryan's 1979 book, Panel by Panel: A History of Australian Comics. On page 211, readers will see the reproduction of a page taken from a comic book, accompanied by the caption: "A page from The Ghost Rider No.8 drawn by Terry Trowell, who produced many comics for Atlas Publications. Atlas, circa 1951"

And that small glimpse was all that many readers would ever know about the life and work of the prodigiously talented writer and illustrator, Terence James Trowell – until now.

Born on 4 September 1918 in Katanning, in the south-west region of Western Australia, Terry Trowell spent the first six years of his life in Malaya, where his father worked as a mining engineer at Ipoh, a tin-mining region in the Malayan state of Perak.

Trowell returned to Australia with his father in 1926, where he was enrolled as a boarder at Perth's Guildford Grammar School. Throughout most of his secondary school years, Trowell also attended the A.B. Webb Art School, founded by the West Australian painter, Archibald Bertram Webb. The active youngster represented his school in boxing, football and athletics, before obtaining his leaving certificate, with a 'distinction' in drawing, in 1936.

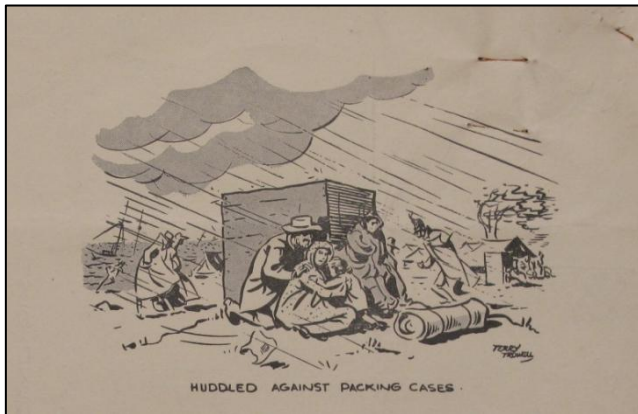
After studying journalism at the University of Western Australia, the twenty year-old Trowell returned to Malaya, where he worked as a journalist on the English language newspaper, the Straits Times. As a reporter stationed in Southeast Asia, Trowell would have only been too aware of Japan's increasingly savage occupation of the Chinese region of Manchuria, which flared into a full-scale war between the China and Japan in 1937. Trowell eventually returned home in 1940, soon after Australia joined Great Britain in declaring war on Nazi Germany.



Trowell enlisted in the Australian Army in July 1942, where his unique skills as an artist, combined with his personal experience of the Asia-Pacific region, earmarked him for military service with such specialised branches as Operational Intelligence, the Allied Intelligence Bureau and 'Z-Force', a special operations commando unit that undertook dangerous missions behind Japanese lines. Trowell's own duties included topography and map-making, as well as

interrogating prisoners of war in Malaya at the end of hostilities.

Discharged with the rank of Australian Army corporal in July 1946, Trowell travelled to England where he studied art, before crossing the English Channel to France, where he lived and worked as a freelance artist for several months.



Trowell decided to return to Australia in 1948, travelling en route through the United States, before eventually disembarking in Perth later that year. On his return home, Trowell secured work painting a series of murals for several hospitals, hotels and other commercial buildings.

Trowell was subsequently commissioned to illustrate a series of social studies' books, documenting Western Australian history. The first volume, Early Days of W.A. Towns was written by John Stokes,

and was published in 1949 by Carroll's Pty Ltd for use in local high schools.

The following year, he moved to Melbourne, where he was joined by his wife, Patricia Aileen Powell, a school teacher who was studying music and training to be a concert pianist. This period marked the beginning of Trowell's involvement with Australia's then-booming comic book publishing industry. At some point during late 1950 – early 1951, Trowell commenced work as a freelance writer and illustrator for Atlas Publications, a Melbourne company which had scored an early commercial success with the superhero comic Captain Atom in 1948, and was rapidly expanding its comic book range.

Trowell's first series for Atlas Publications was The Grey Domino (63 issues), a masked vigilante described as "the hooded nemesis of crime", which debuted in 1951.

For his next series, Trowell inherited a cowboy comic titled The Ghost Rider (57 issues).

Terry Trowell took over as writer and illustrator of the series with the sixth issue and the improvements were immediate and dramatic.

In 1952, Terry Trowell returned to Perth, where he established his own commercial art studio. Nonetheless, he kept working as a freelance comic artist for Atlas Publications, continuing to write and illustrate both The Grey Domino and The Ghost Rider. To these, Trowell added a new title, Rhino Beresford (10 issues), which was released by Atlas Publications in 1957.

During this period Terence Trowell was commissioned to paint the GSSHS murals

Trowell headed eastward once more in 1956, to take up the role of Art Director for Modern Motor, which was published in Sydney by Modern Magazines Pty. Ltd., a company that also produced such special interest titles as Modern Boating and Australian Cricket.

Trowell's other major comic book for Modern Magazines Pty Ltd was the truly offbeat, one-shot title, Purple People Eater. Taking its name from the popular song recorded by Sheb Wooley in 1958, Purple People Eater was a freewheeling romp of a comic, full of space aliens, a hip-swivelling Elvis look-alike, beatniks and a spear-wielding witchdoctor that not only defied description, but mirrored some of the best satirical comic strips then appearing in America's famous Mad Magazine.

The year 1960, however, saw Trowell return to Western Australia, where he established a new company, Trowell Purdon Advertising, which specialised in advertising layouts and illustrations. The following year saw Trowell enter Australia's burgeoning television industry, working for the West Australian branch of the Australian Broadcasting Commission, where he appeared on a

children's television programme to use puppets for on-air drawing lessons. He subsequently joined the J. Gibney & Sons Art Studio as their chief illustrator and designer in 1962.

Sadly, Terry Trowell's life and work was cut all too short on 23 October 1964, when he died from a war-related medical condition. While the history of Australian comics is all the poorer for his untimely death, Terry Trowell nonetheless left behind a significant body of work which entertained countless readers and enriched the comic book medium.

Copyright Information

All content on this blog, unless otherwise stated, is copyright © Kevin Patrick. Material appearing on this blog may be freely cited elsewhere for purposes of criticism and review - just so long as you provide a link back to this blog! All other material appearing on this blog (such as externally sourced artwork, article reprints/extracts, etc) are copyright their respective copyright owners and are reproduced here under the "fair dealing for purpose of criticism or review" provisions of the Copyright Act 1968 (Australia).

About Me

Kevin Patrick

Kevin Patrick is a freelance writer and former magazine editor/publisher, based in Melbourne, Australia. He has written on such topics as Internet technology, small business, aviation and literature for a diverse range of Australian magazines. He is the author of the 'Amazing Australia' children's book series, currently published by Random House Australia. He has a longstanding interest in Australian comics and curated the exhibition, Heroes and Villains: Australian Comics and their Creators, which was held at the State Library of Victoria (Oct 2006 - Feb 2007)

On 17th November 2012, and using the buzzproductions2001 address, I emailed Kevin the following:

I used to teach at Governor Stirling High School in Midland WA between 1964-1999. The School was built in the early 50s. The school had four murals of early historical figures responsible for the European Settlement of WA in the Swan River area in 1829 and onwards. They were signed by Trowell and were dated to my recollection 1952 or thereabouts. The artist Trowell did portraits of all the personnel except one for whom there was no reference, so that person is shown with his back to the viewer.

The school is being rebuilt and the new building is due to be opened next year. I spoke recently with the current Principal who has little knowledge of the history behind the murals but assures me the paintings are in storage. I promised to research the murals, particularly as someone commented during my time at the school that they were "valuable paintings".

Is there any detail you covered in the preparation for your blog that can link the murals held by Governor Stirling Senior High School to Terry Trowell?

Because of my personal interest in the historical records associated with the school, given that it is named after the first governor of the State, I am anxious that information is accurate.

I would appreciate what help you can give.

Kevin Patrick responded and a number of emails passed between us.

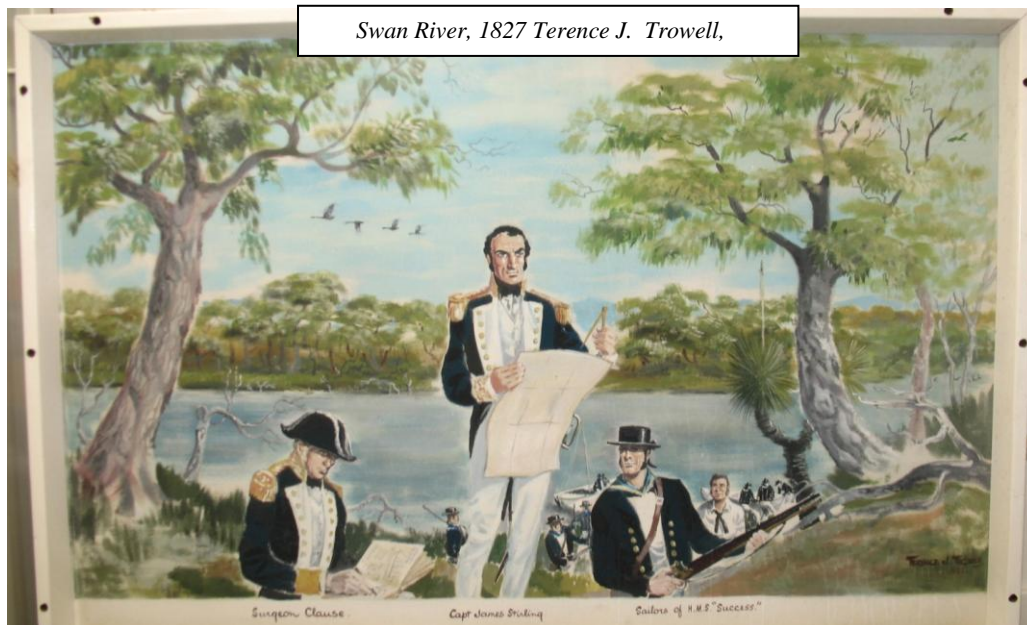
On 23rd April 2013 he blogged the following:

Comics Down Under

Comics Down Under is devoted to the history of Australian comic books, from the 1930s and 40s to the present day. Each instalment looks at a different aspect of Australian comics' history, ranging from landmark characters and their creators, to profiles of publishing companies and interviews with current Australian comic writers and artists.

Friday, April 19, 2013

Terry Trowell - "Lost" Paintings Uncovered in WA



Sometimes publishing a post on this blog can yield delightful, yet unexpected results, especially when it comes to documenting the history of Australian comics and their creators. Nearly three years after posting my previous entry on the West Australian-born comic artist Terry Trowell, I was contacted by Brian Crisp, a former teacher employed at the Governor Stirling Senior High School in Midland, Western Australia, during 1964-1999. In an email dated November 2012, Brian informed me that, for several decades, the school had displayed a series of four painted murals, depicting historical figures responsible for the early European settlement around the Swan River area from 1829 and onwards. Brian recalled that the artist's surname was "Trowell", and had wondered whether the artist responsible for those murals might have been the very same Terry Trowell mentioned on this blog.

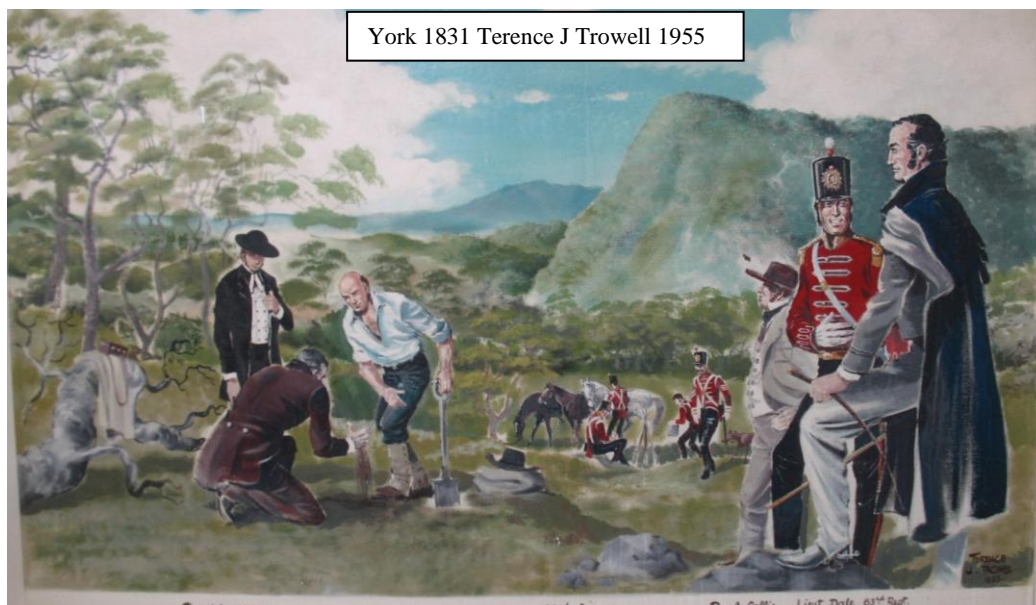


At the time Brian first contacted me; the Governor Stirling Senior High School was closed for redevelopment, and was not due to be reopened until early 2013. However, Brian was assured by the school's principal that the murals were safely in storage. But until either Brian or myself saw the murals (or photographs thereof), we could only speculate if they were the work of Terry Trowell.

However, Brian's detective work and persistence has paid off! The murals, he has since discovered, were presented to the school by a local businessman and art benefactor, Sir Claude Hotchin (1898-1977), as a gift to mark the school's official opening in 1959. The murals (measuring approximately 2m x 1m each) have been in storage for the last two years while the school underwent redevelopment, but now Brian has had a chance to photograph them.



They are signed "Terence J. [James] Trowell", and are dated 1955 - this clearly coincides with Trowell's return to West Australia during 1952-56, after working for eastern state publishers, including Atlas Publications (Melbourne).



Even if these murals were unsigned, few eagle-eyed Australian comic collectors would have had trouble recognising Trowell's distinctive style of illustration, especially amongst those familiar with his painted covers for Jet Black - Racing Driver!

Brian has very kindly agreed to let me reproduce cropped images of the four painted murals on this blog, and has promised to share any further findings from his research into the Sir Claude Hotchin art gift to Governor Stirling Senior High School. Thank you, Brian!

Posted by Kevin Patrick at 5:46 pm

Labels: Atlas Publications, Australian comics, Governor Stirling Senior High School, Sir Claude Hotchin, Terry Trowell, Western Australia

After this correspondence with Kevin Patrick, I researched in the Battye Library for Claude Hotchin. There was lot of material.

On 5th May 2013 I emailed

Greetings Kevin

Attached is the correspondence I have unearthed from Claude Hotchin's papers that relate to Terence Trowell. They make interesting reading. I have included a letter from the Midland High School P&C because it would appear that Hotchin had an interest in the Midland (Junction) district for some time.

It was interesting to know that Trowell was paid 100 pounds for the murals. In 1955 I was paid seven pounds a week by the Education Department as a trainee teacher by way of comparison.

School resumes tomorrow and I will see if I can get better pics of the murals ... so it may be some time before I finalise my researches. However, in my opinion, the provenance is complete.

Regards Brian

He replied

Dear Brian

Thank you so much for forwarding this information on to me - it's so rare to find background correspondence concerning the works of Australian comic book artists/commercial illustrators like Terry Trowell, that these transcriptions of correspondence are a great find, indeed!

I'll read them at my leisure in the next few days and, with your permission, might further amend my blog post to include some of these facts (such as the amount Trowell was paid, etc). If you wish, I can email you the revised text for this blog post, so you can approve it, prior to it being published online.

Terry's son, Mark Trowell, has been in touch with me since I published my blog post on these murals, and said he's got photos of other framed illustrations and/or painting & murals that his father did for various public buildings & business premises in WA during the 1950s and 60s. So, who knows? We may yet unearth more of his work!

In September of 2014, when drafting this publication, I attempted to contact Kevin Patrick again to tell him of my actions since my previous emails with him in May 2013.

The buzzproductions2001 address was no longer active.

A search for Kevin Patrick in Australia gave

*Dr. Kevin Patrick Research Assistant at Monash University Melbourne, Australia,
School of Media, Film and Journalism, Writing and Editing, Graduate Student*

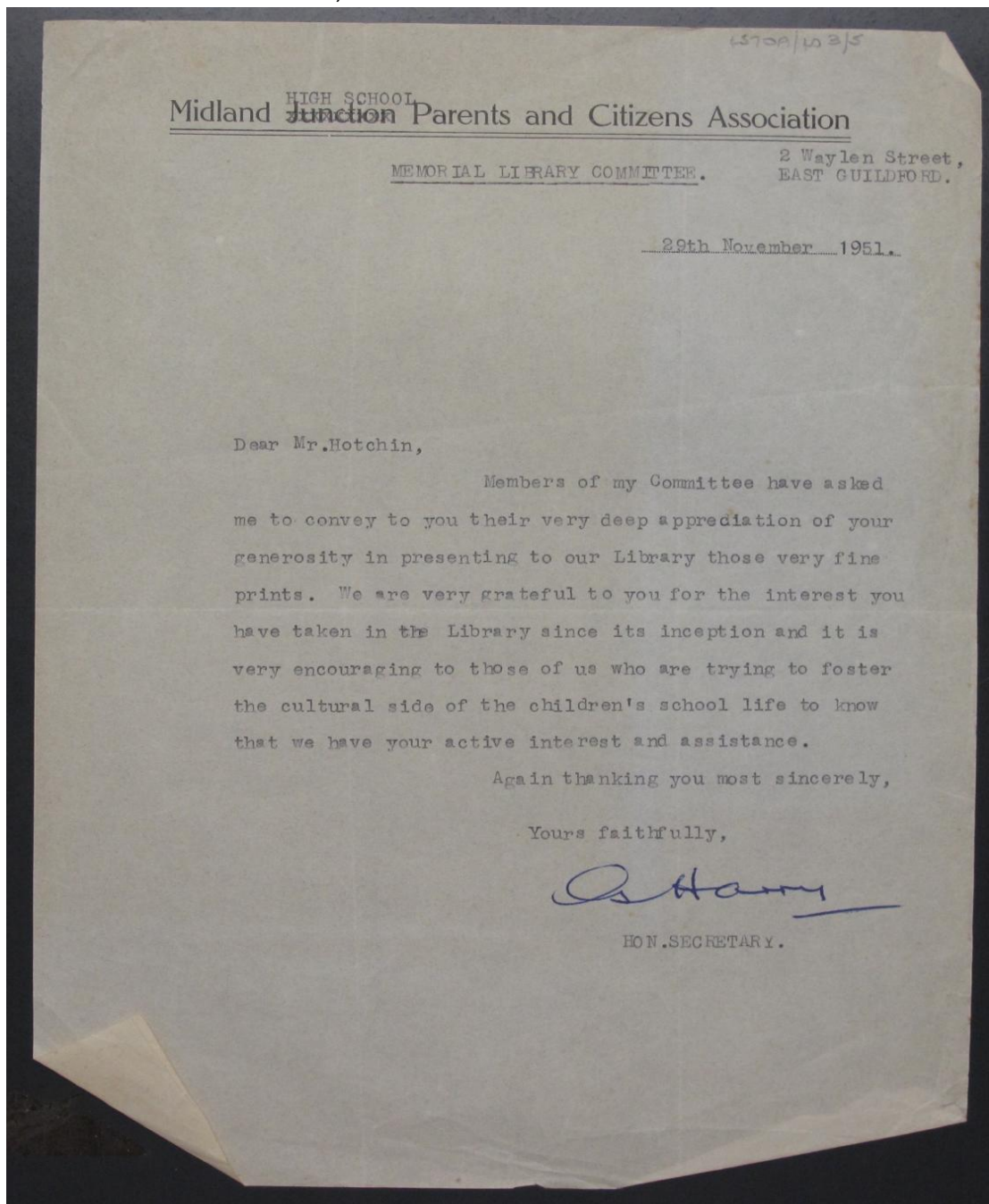
with a link to [Comics Down Under](#).

I anticipate that I will be able to re-establish contact with Kevin Patrick.



APPENDIX: The Claude Hotchin Battye Library extracted files

(SL Ref: 4570A/403/5 MN1238)



29th

November 1951
2 Waylen Street East Guildford

Midland ~~Junction~~ High School Parents and Citizens Association
Memorial Library Committee

Dear Mr Hotchin

Members of my Committee have asked me to convey to you their very deep appreciation of your generosity in presenting to our Library those very fine prints. We are very grateful to you for the interest you have taken in the Library since its inception and it is very encouraging to those of us who are trying to foster the cultural side of the children's school life to know that we have your active interest and assistance.

Again thanking you most sincerely

Yours faithfully
G Harry Hon Secretary

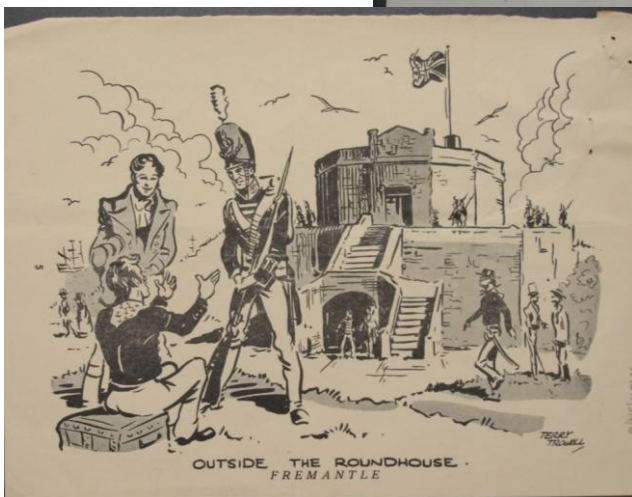
(SL Ref: 4570A/319/14 MN1238)
22 April 1955
2 Edward Street Nedlands
Dear Mr Hotchin

Re: Stirling Murals to be completed
under a Claude Hotchin Bequest

Dr Robertson, Director of Education, rang me and informed me that you were concerned about the murals because the artist, Terry Trowell was unknown to you, and you therefore knew nothing of the quality of his work. Dr Robertson further said that you now preferred to see a complete mural. The completion of the remaining four murals was contingent on your approval of the first mural. This appears to be a reasonable safeguard, and I have informed the artist accordingly.

I feel confident that you will be very satisfied with the first of the murals. There are many examples of Mr Trowell's work in the metropolitan area, including murals, panels and decorations at His Majesty's Theatre, Fremantle Hospital, Mayfair Theatre, Lady Lawley Cottage, Australia Hotel, O.B.H Cotteloe etc. I am enclosing a sample of Mr Trowell's work "The Round House, Fremantle" which is one of the illustrations Mr Trowell did for a Local History book of mine published in 1949.

Thanking you for your very generous offer.
I am
Yours faithfully
JP Stokes
Chairman of the Council, W. A. Historical Society



4570A/319/14
2 Edward Street
Nedlands,
WA: 4:55

Mr Claude Hotchin
"Mandalay"
Gulfport

Dear Mr Hotchin

Re Stirling Murals to be
completed under a Claude Hotchin Bequest.

Dr Robertson, Director of Education, rang me and informed me that you were concerned about the murals because the artist, Terry Trowell was unknown to you, and you therefore knew nothing of the quality of his work. Dr Robertson further said that you now preferred to see a completed mural. The completion of the remaining four murals was contingent on your approval of the first mural. This appears to be a reasonable safeguard, and I have informed the artist accordingly.

I feel confident that you will be very satisfied with the first of the murals. There are many examples of Mr. Trowell's work in the metropolitan area, including murals, panels and decorations at His Majesty's Theatre, Fremantle Hospital, Mayfair Theatre, Lady Lawley Cottage, Australia Hotel, O.B.H Cotteloe etc.

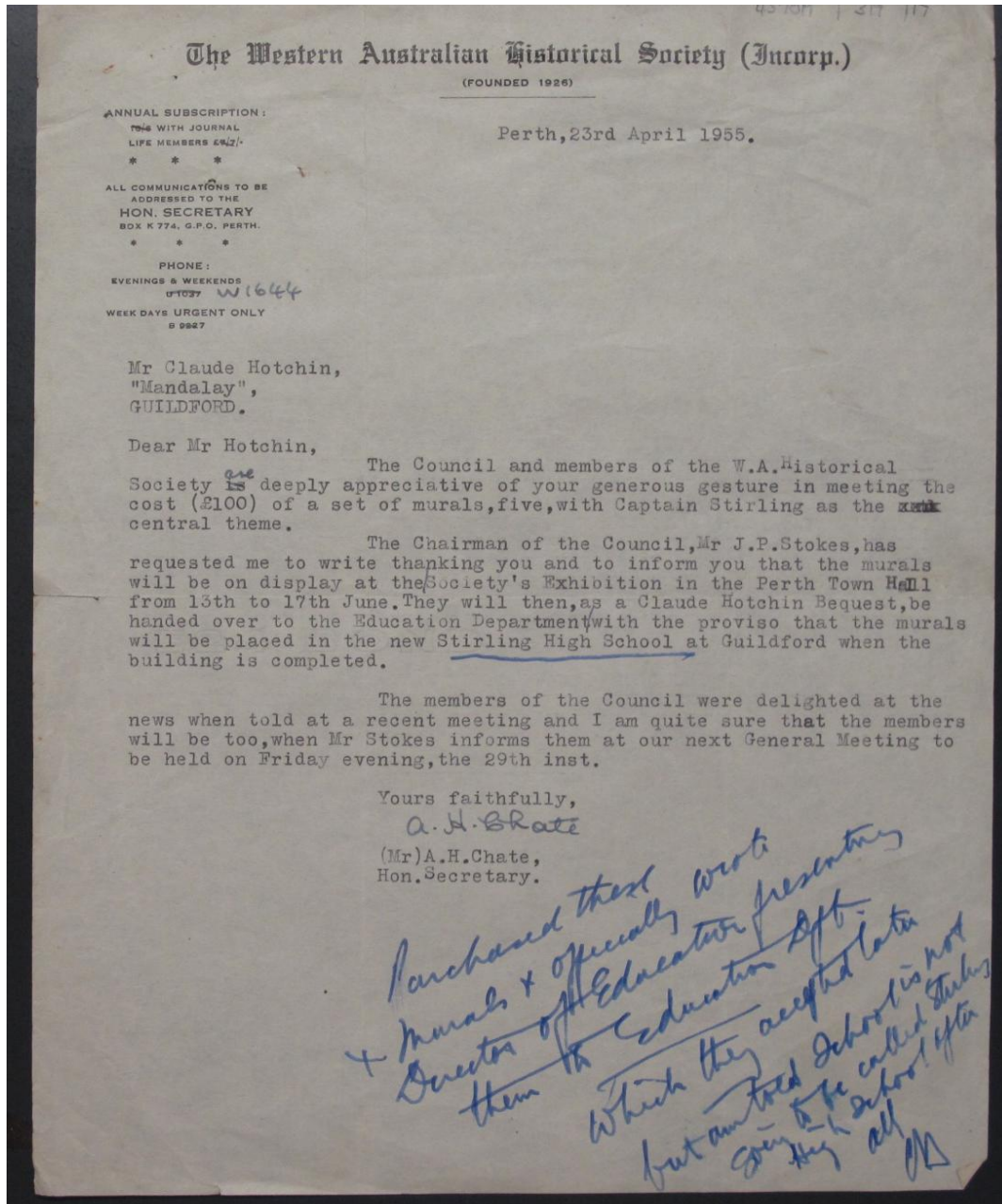
② 4570A/319/15

is one of the illustrations Mr. Trowell did for a local history booklet of mine published in 1949.

Thanking you for your very generous offer.

I am,
Yours faithfully
JP Stokes
(JP Stokes)
Chairman of the Council,
W.A. Historical Society

(SL Ref: 4570A/319/16 MN1238)



23rd April 1955
 Mr Claude Hotchin
 "Mandalay"
 GUILDFORD
 Dear Mr Hotchin

THE WESTERN AUSTRALIAN HISTORICAL SOCIETY (Incorp)

The Council and Members of the W.A. Historical Society ~~is~~are deeply appreciative of your generous gesture in meeting the cost (£100) of a set of murals, five, with Captain Stirling as the central theme.

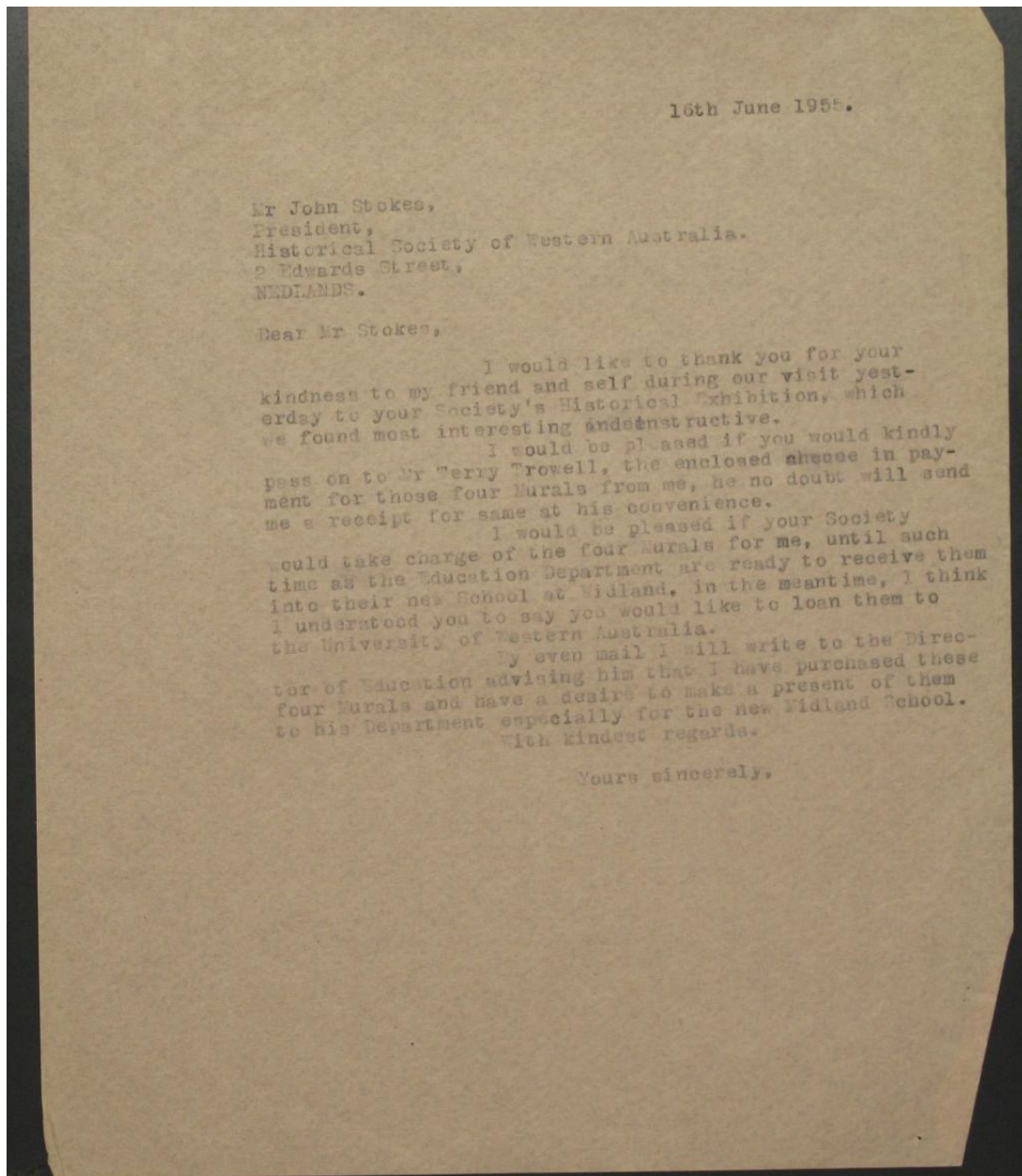
The Chairman of the Council, Mr J.P. Stokes, has requested me to write thanking you and to informs you that the murals will be on display at the Society's Exhibition in the Perth Town Hall for 13th to 17th June. They will then, as a Claude Hotchin Bequest, be handed over to the Education Department with the proviso that the murals will be placed in the new Stirling High School at Guildford when the building is completed.

The members of the Council were delighted at the news when told at a recent meeting and I am quite sure that the members will be too, when Mr Stokes informs them at our next General Meeting to be held on Friday evening, the 29th inst.

Yours faithfully (Mr) A.H. Chate
 Hon. Secretary

(Hotchin notes on this letter, after underling Stirling High School,

"Purchased these 4 Murals & officially wrote Director of Education presenting them to the Education Dpt which they accepted later but am told School is not going to be called Stirling High School after all CH")



16th June 1955
Mr John Stokes
President
Historical Society of Western Australia
2 Edwards Street
Nedlands
Dear Mr Stokes

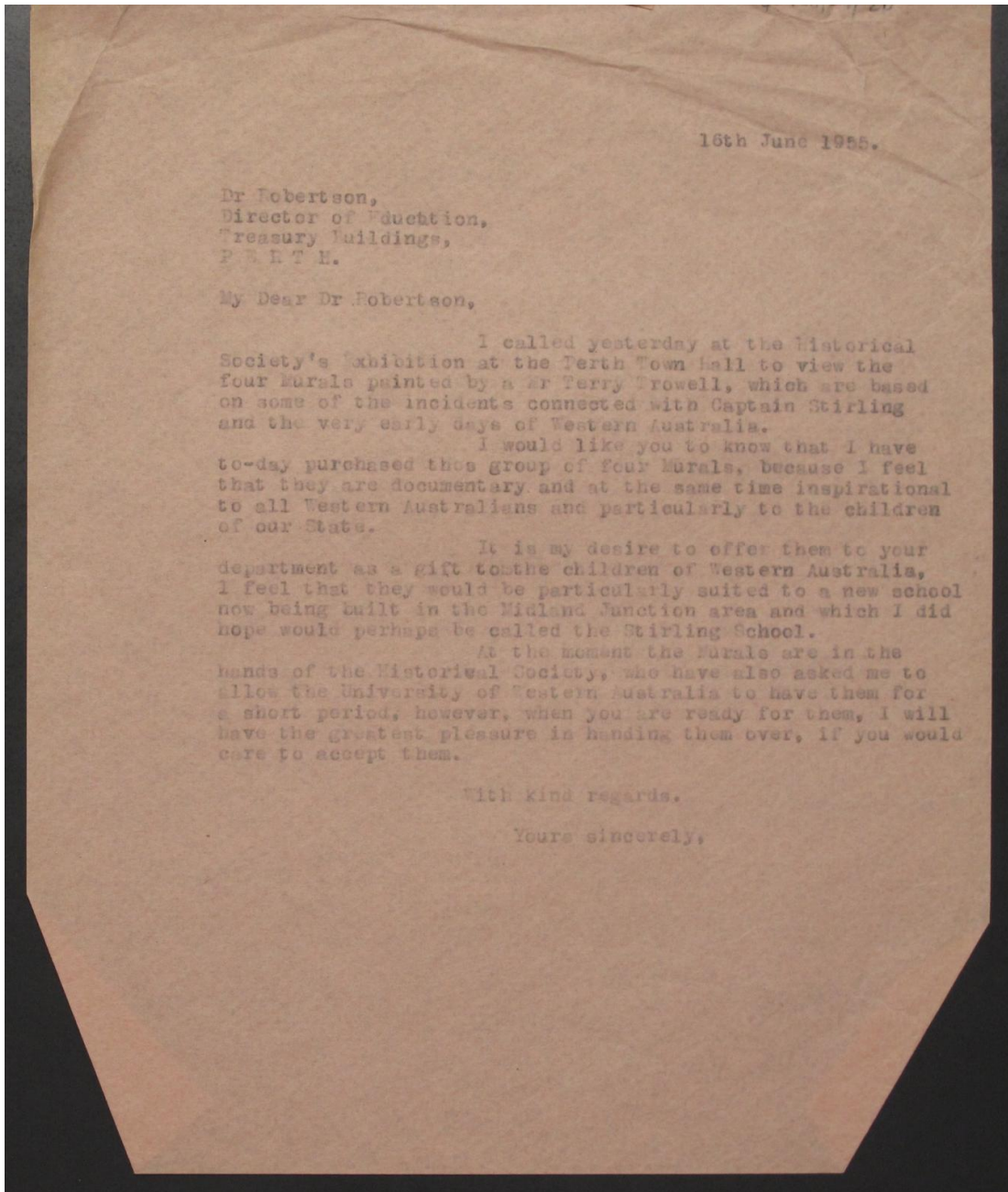
I would like to thank you for your kindness to my friend and self during our visit yesterday to your Society's Historical Exhibition, which we found most interesting and instructive.

I would be pleased if you would kindly pass on to Mr Terry Trowell, the enclosed cheque in payment for those four murals from me, he no doubt will send me a receipt for same at his convenience.

I would be pleased if your Society would take charge of the four murals for me, until such time as the Education Department are ready to receive them into their new school at Midland. In the meantime, I think I understood you to say you would like to loan them to the University of Western Australia.

By even mail I will write to the Director of Education advising him that I have purchased these four Murals and have a desire to make a present of them to his Department especially for the new Midland School.

With kindest regards
Yours sincerely
(C Hotchin)



16th June 1955

Dr Robertson
Director of Education
Treasury Buildings
PERTH

Mr Dear Dr Robertson

I called yesterday at the Historical Society's Exhibition at the Perth Town Hall to view the four Murals painted by a Mr Terry Trowell, which are based on some of the incidents connected with Captain Stirling and the very early days of Western Australia.

I would like you to know that I have to-day purchased this group of four Murals, because I feel that they are documentary and at the same time inspirational to all Western Australians and particularly to the children of our State.

It is my desire to offer them to your department as a gift to the children of Western Australia, I feel that they would be particularly suited to a new school now being built in the Midland Junction area and which I did hope would perhaps be called the Stirling School.

At the moment the Murals are in the hands of the Historical Society, who have also asked me to allow the University of Western Australia to have them for a short period, when you are ready for them, I will have the greatest pleasure in handing them over, if you would care to accept them.

With kind regards

Yours sincerely

(C Hotchin)

30th June 1955.

Dear Mr Trowell,

I have been in touch with Dr Crowley, of the University of Western Australia and have arranged for you to pick up those 4 Murals whenever you care to do so, however Dr Crowley said that the Students were very interested in them and if you could leave them for say another fortnight, he would like it. I would therefore suggest that you pick them up about the 14th of July. Dr Crowley suggests that when you call at the University, all you will need to do is to ask at the main office to be directed to Dr Crowley's Office, should he not be in his office or hard to locate, he suggests that you take the four Murals from his room and just leave a message on his desk that you have been and all will be well.

I will therefore reckon that you will do this and that you will give me a ring when you feel I can take them over from you, perhaps you would drop them out here to me and have a cup of Tea or a Drink with us at the same time.

I am enclosing the form which I want you to sign in regard to the copyright of the four Murals, if you will kindly sign and get your friend to witness, you could post same back to me with a receipt for the £100. which I have sent to you via Mr Stokes in payment for the 4 Murals.

With kindest regards.

Yours sincerely,

30th June 1955

Dear Mr Trowell

I have been in touch with Dr Crowley, of the University of Western Australia and have arranged for you to pick up those 4 Murals whenever you care to do so; however Dr Crowley said that the Students were very interested in them and if you could leave them for another fortnight, he would like it. I would therefore suggest that you pick them up about the 14th of July; Dr Crowley suggests that when you call at the university, all you will need to do is to ask at the main office to be directed to Dr Crowley's Office, should he not be in his office or hard to locate, he suggests that you take the four Murals from his room and just leave a message on his desk that you have been and all will be well.

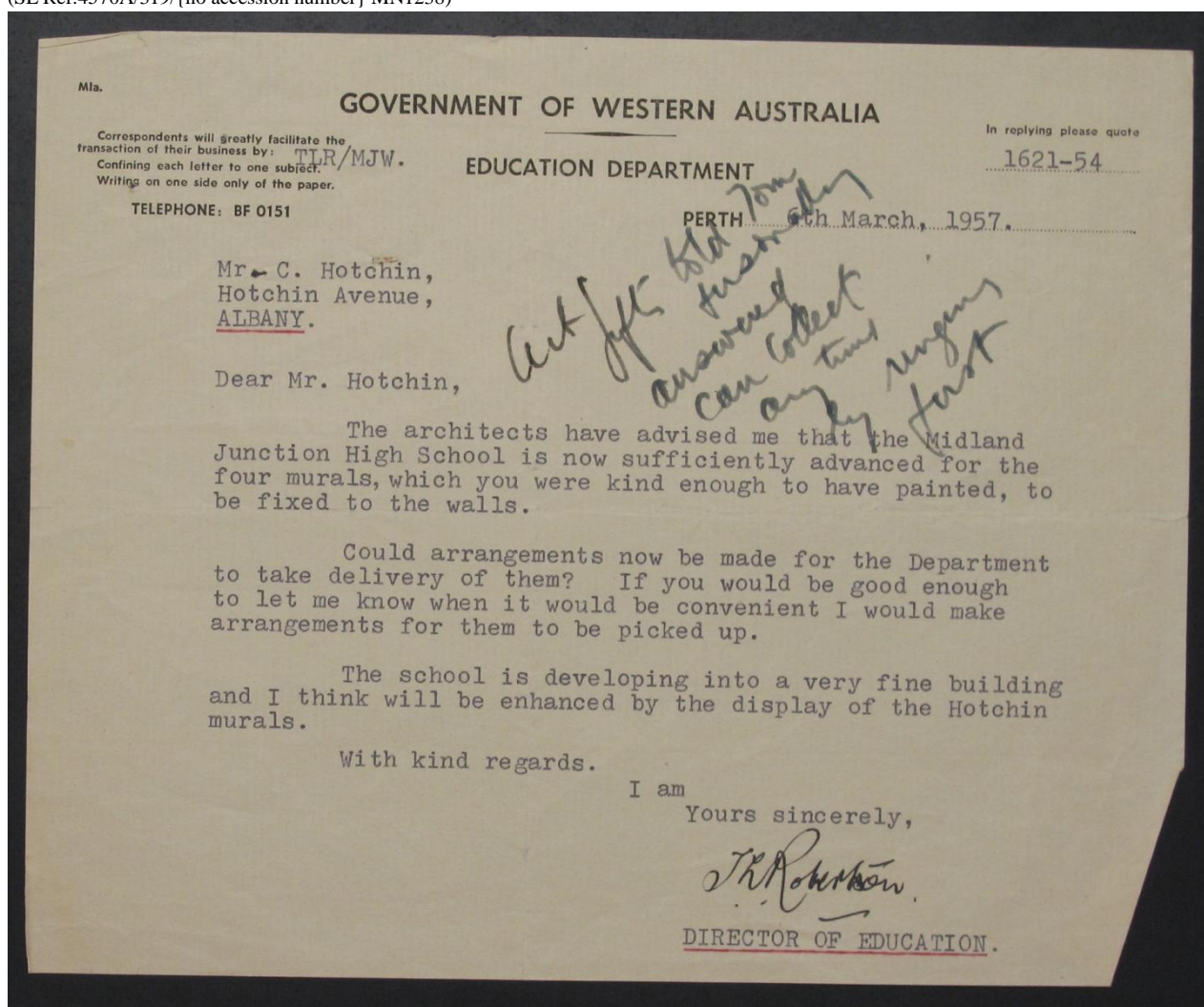
I will therefore reckon that you will do this and that you will give me a ring when you feel I can take them over from you, perhaps you would drop them out here to me and have a cup of Tea or a Drink with us at the same time.

I am enclosing the form which I want you to sign in regard to the copyright of the four Murals, if you will kindly sign and get your friend to witness, you could post same back to me with a receipt for the £100. which I have sent to you via Mr Stokes in payment for the 4 Murals.

With kindest regards.

Yours sincerely

(C Hotchin)



6th March 1957

GOVERNMENT OF WESTERN AUSTRALIA
EDUCATION DEPARTMENT

in replying please quote
1621-54

TLR/MJW

Mr C Hotchin
Hotchin Avenue
ALBANY
Dear Mr Hotchin

The architects have advised me that the Midland Junction High School is now sufficiently advanced for the four murals, which you were kind enough to have painted, to be fixed to the walls.

Could arrangements now be made for the Department to take delivery of them? If you would be good enough to let me know when it would be convenient I would make arrangements for them to be picked up.

The school is developing into a very fine building and I think will be enhanced by the display of the Hotchin murals.

With kind regards.

I am

Yours sincerely

T.L. Robertson

Director of Education

Hotchin notes on the letter

"Art gifts told Tom personally answered can collect any time by ringing first"

